



# Parts Manual

Mfg. No: 1696202-00  
SIM924E, 9TP 24" Dual Stage  
Snowthrower (CE/Export)



---

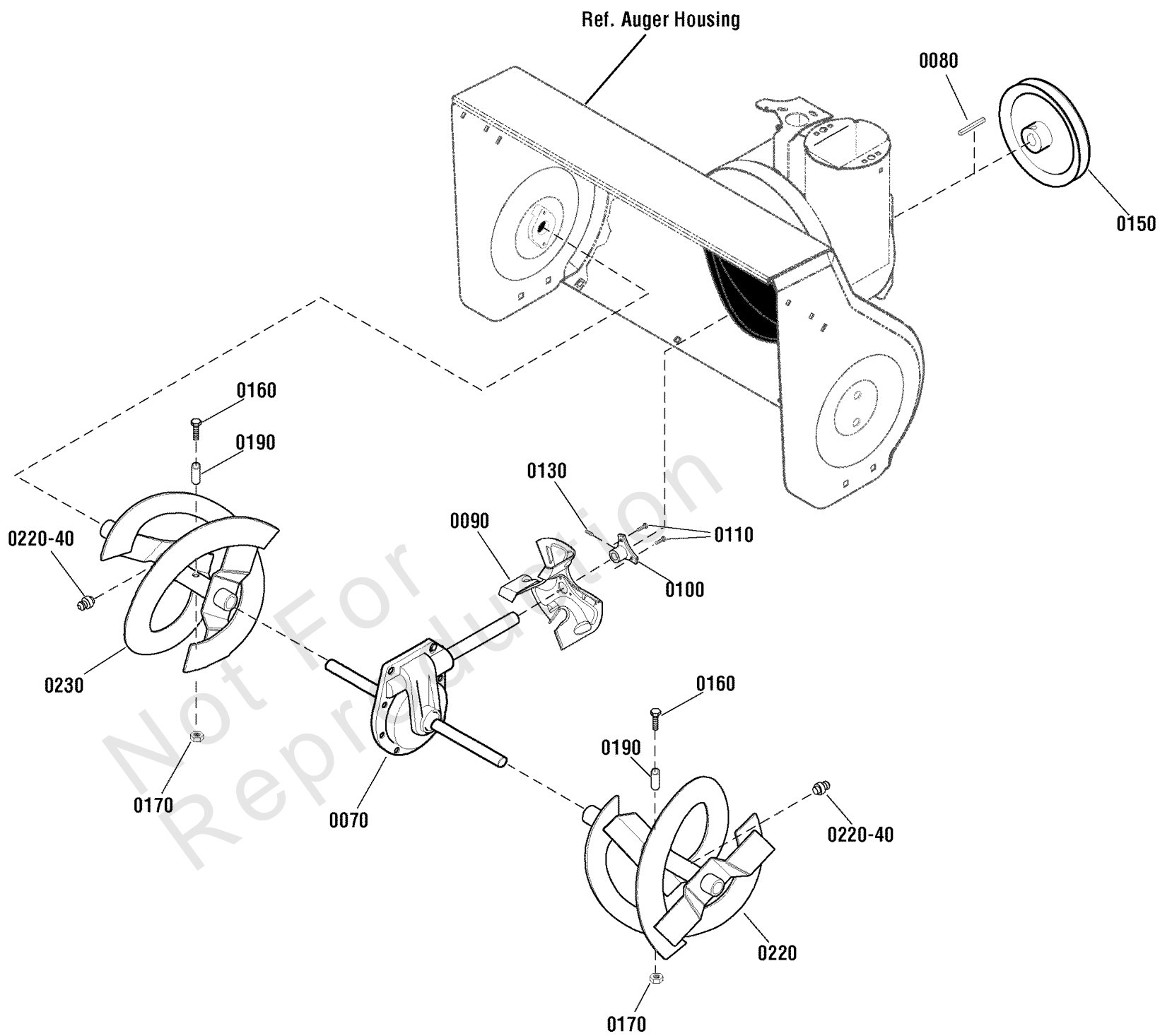
| <b>Model Components</b>   | <b>Page</b> |
|---|-------------|
| Auger Drive Group.....  | 4           |
| Auger Housing Group.....  | 6           |
| Chute & Rotation Group - Dash Mount Crank.....                      | 8           |
| Decals Group.....   | 10          |
| Engine & Frame Group - 9TP.....                                     | 12          |
| Gear Case Assembly (1752221PH_1753072SVC_1752087PH_1753073SVC)..... | 16          |
| Handles & Controls Group - Dash Mount Crank.....                    | 18          |
| Traction Drive Group - Standard.....                                | 22          |
| Wheels & Tires Group.....   | 24          |
| Torque Specification Chart.....                                     | 26          |

Not For  
Reproduction

# Auger Drive Group

Note: Unless noted otherwise, use the standard torque specifications

Mfg. No: 1696202-00



## Auger Drive Group

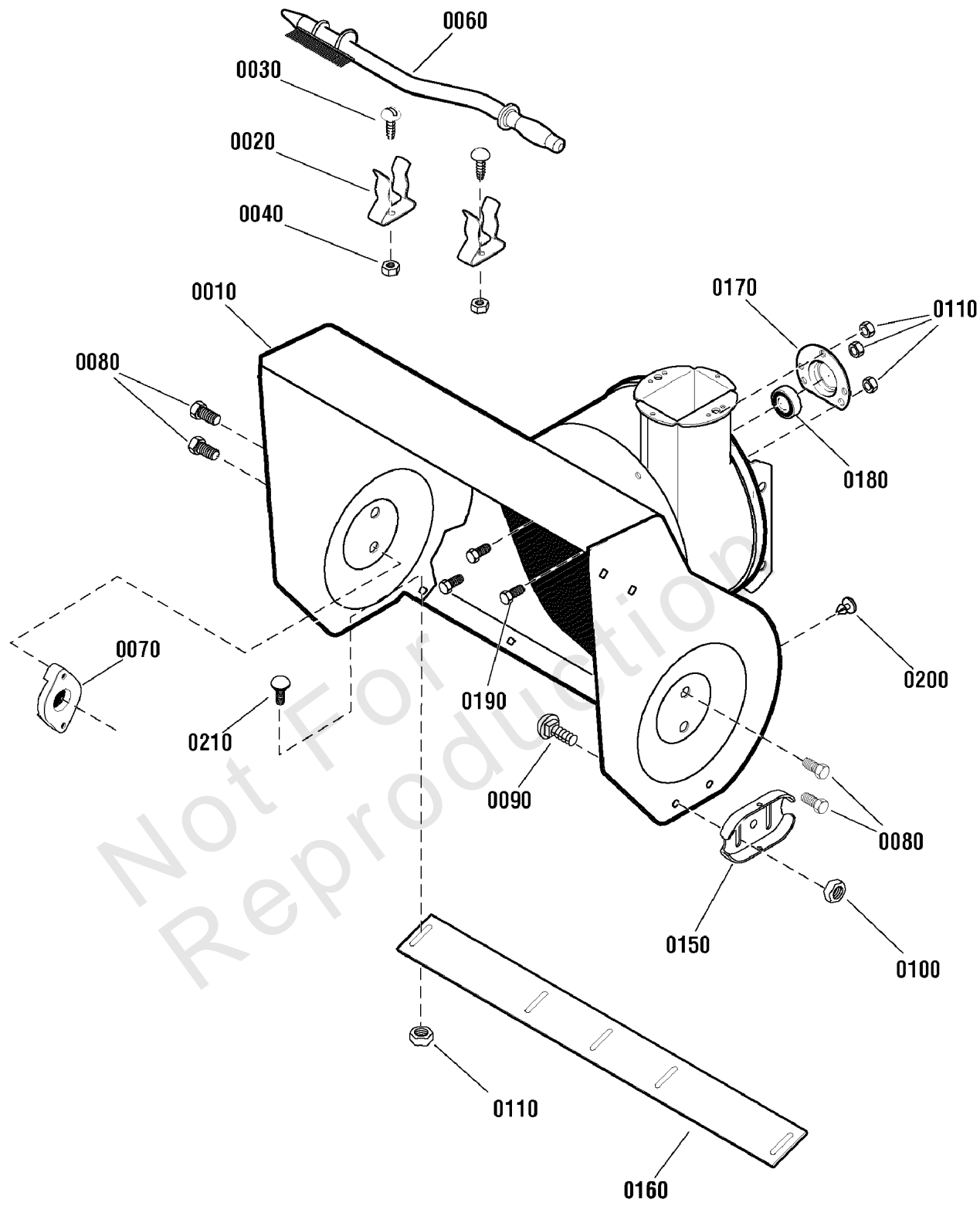
| REF NO  | PART NO  | QTY | DESCRIPTION                            |
|---------|----------|-----|--|
| 0070    | 1753072  | 1   | GEAR CASE ASSEMBLY                     |
| 0080    | 720650   | 1   | KEY, Square                            |
| 0090    | 1739094A | 1   | IMPELLER                               |
| 0100    | 1739073  | 1   | HUB, Impeller                          |
| 0110    | 1930601  | 3   | SCREW, Hex Washer Head, 5/16-18 x 5/8  |
| 0130    | 7090848  | 3   | SET SCREW, Socket Head, 5/16-18 x 1/2  |
| 0150    | 722128   | 1   | PULLEY                                 |
| 0160    | 726061   | 2   | CAPSCREW, Hex Head, 1/4-20 x 1-3/4, G2 |
| 0170    | 725429   | 2   | NUT, Hex Centerlock, 1/4-20            |
| 0190    | 723913   | 2   | SPACER, Sleeve, 1/4 x 1/2              |
| 0220    | 1738299A | 1   | AUGER, LH, 24"                         |
| 0230    | 1738300A | 1   | AUGER, RH, 24"                         |
| 0220-40 | 721620   | 2   | FITTING, Grease                        |
| --      | 722130   | 1   | KIT, Shear Bolt                        |

Not For Reproduction

# Auger Housing Group

Note: Unless noted otherwise, use the standard torque specifications

Mfg. No: 1696202-00



## Auger Housing Group

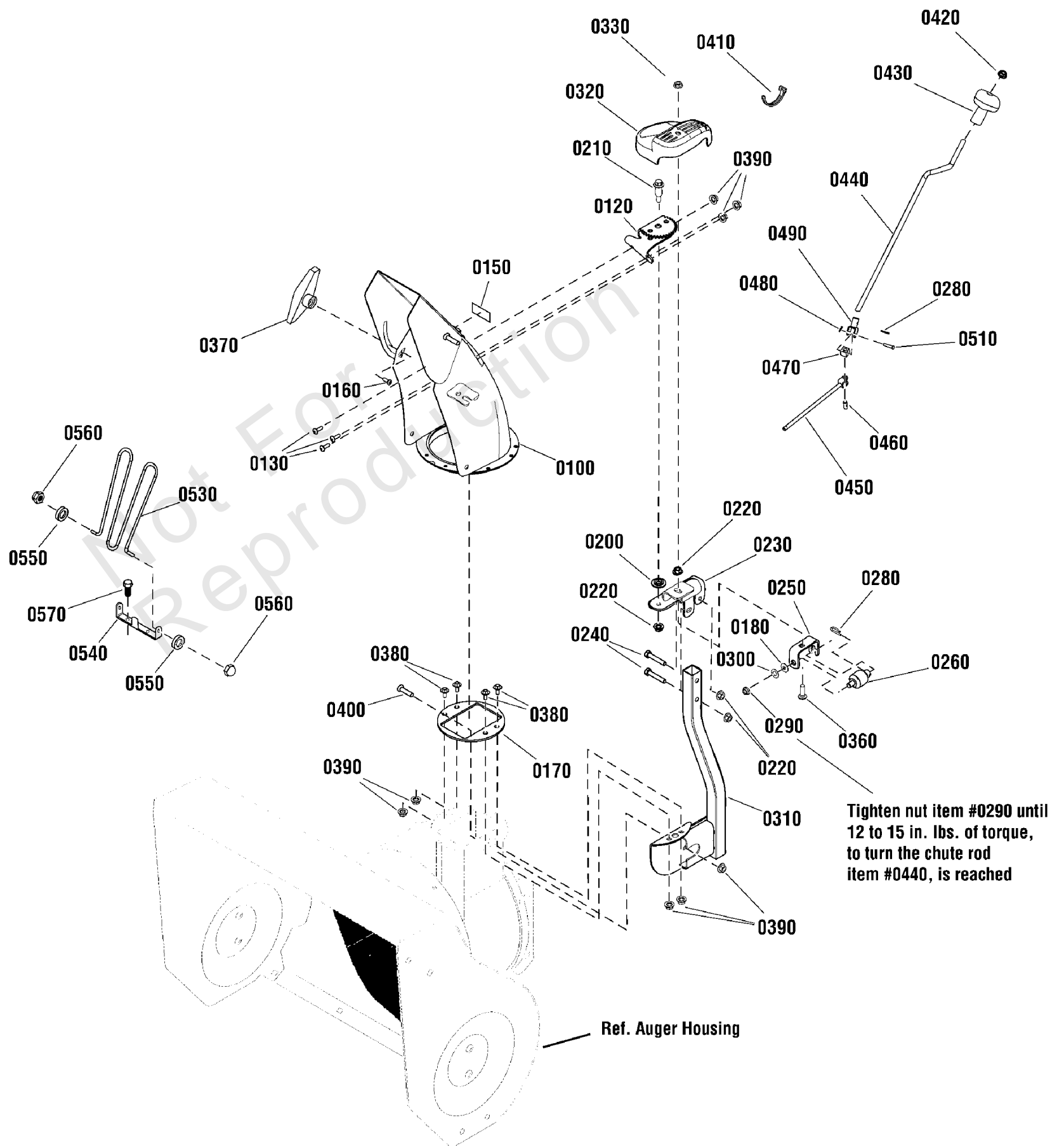
| REF NO | PART NO  | QTY | DESCRIPTION                             |
|--------|----------|-----|---|
| 0010   | 1738263C | 1   | AUGER HOUSING ASSEMBLY, 24"             |
| 0020   | 1736620  | 2   | CLAMP, Retainer                         |
| 0030   | 1960569  | 2   | SCREW, Truss Head Torx, #10-24 x 3/8    |
| 0040   | 722401   | 2   | NUT, Nylock, 10 x 24                    |
| 0060   | 1736094  | 1   | BRUSH, Cleanout                         |
| 0070   | 724427   | 2   | BEARING, Auger Shaft                    |
| 0080   | 722839   | 4   | CAPSCREW, Hex Head, 5/16-18 x 3/4       |
| 0090   | 7091547  | 4   | BOLT, Carriage, 3/8-16 x 3/4, G5        |
| 0100   | 7091619  | 4   | NUT, Hex Flange, 3/8-16                 |
| 0110   | 725273   | 7   | NUT, Hex Flange, Serrated Lock, 5/16-18 |
| 0150   | 1727854A | 2   | SHOE, Skid, Reversible                  |
| 0160   | 1738301A | 1   | BLADE, Scraper, 24"                     |
| 0170   | 724712   | 1   | RETAINER, Ball Bearing                  |
| 0180   | 1705897  | 1   | BEARING, Ball                           |
| 0190   | 720018   | 3   | BOLT, Hex, 5/16-18 x 5/8                |
| 0200   | 725521   | 2   | PLUG, Panel                             |
| 0210   | 7090799  | 4   | BOLT, Carriage, 5/16-18 x 5/8, G5       |

Not For Reproduction

# Chute & Rotation Group - Dash Mount Crank

Note: Unless noted otherwise, use the standard torque specifications

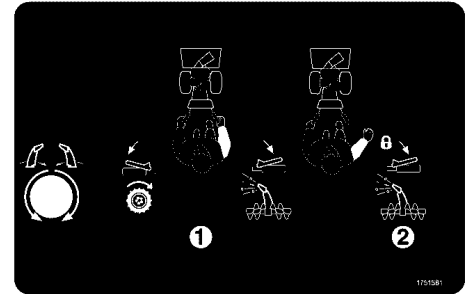
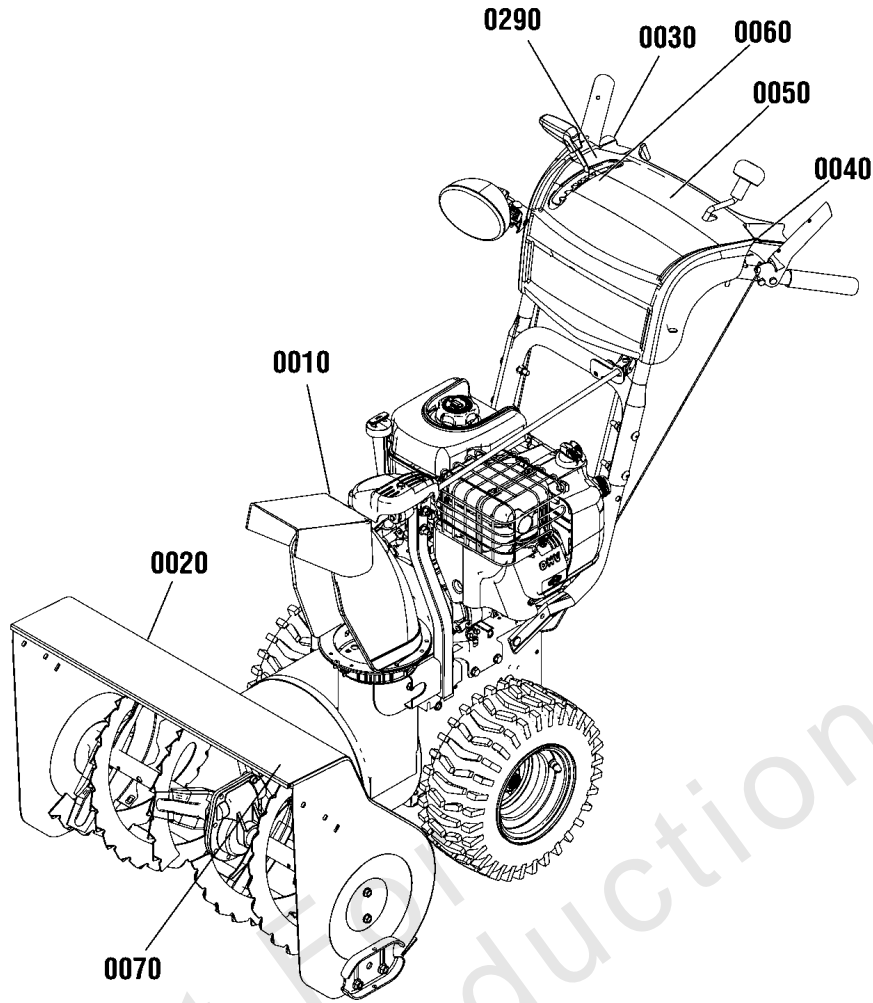
Mfg. No: 1696202-00



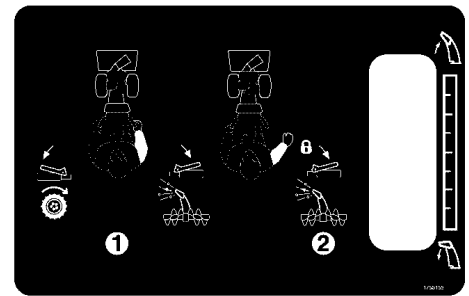


## Chute & Rotation Group - Dash Mount Crank

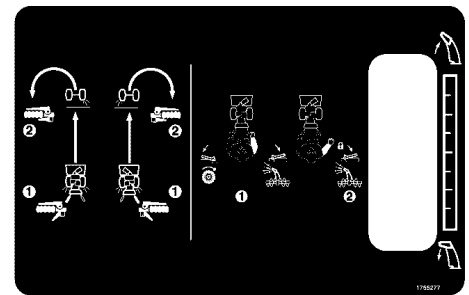
| REF NO | PART NO    | QTY | DESCRIPTION                             |
|--------|------------|-----|---|
| 0100   | 1736379CYP | 1   | CHUTE                                   |
| 0120   | 1736038YP  | 1   | GEAR, Chute Support                     |
| 0130   | 1960715SM  | 3   | SCREW, Truss Head Torx, 1/4-20 x 3/4    |
| 0150   | 1706085SM  | 2   | DECAL, Strip                            |
| 0160   | 704210     | 1   | BOLT, Carriage, 5/16-18 x 1-1/2 G5      |
| 0170   | 1735767YP  | 1   | GUIDE, Chute Ring                       |
| 0180   | 2860210SM  | 3   | WASHER, Nylon, 3/8 ID x 1-1/8 OD        |
| 0200   | 1733026SM  | 1   | WASHER, 1/2 ID x 1-1/8 OD               |
| 0210   | 1732412SM  | 1   | BOLT, Shoulder, 5/16-18                 |
| 0220   | 703222     | 4   | NUT, Hex KEPS, 5/16-18                  |
| 0230   | 1734423ASM | 1   | SUPPORT, Gear Crank                     |
| 0240   | 1922127SM  | 2   | SCREW, Hex Head Cap, 5/16-18 x 1 3/4    |
| 0250   | 1738020YP  | 1   | SUPPORT, Worm                           |
| 0260   | 1734439SM  | 1   | WORM, Chute                             |
| 0280   | 1501293MA  | 1   | PIN, Hair                               |
| 0290   | 1960762SM  | 1   | NUT, Hex Lock Jam, ESNA, 3/8-24         |
| 0300   | 1734542SM  | 1   | WASHER, Cup 3/8 ID x 3/4 OD             |
| 0310   | 1736195AYP | 1   | CHUTE SUPPORT                           |
| 0320   | 1734442SM  | 1   | COVER, GEAr                             |
| 0330   | 1935048SM  | 1   | NUT, Hex Flange, Two Way Lock, 5/16-18  |
| 0360   | 1931335SM  | 1   | BOLT, Carriage, Short Neck, 5/16-18 x 1 |
| 0370   | 1501260MA  | 1   | KNOB, Wing, 5/16-18                     |
| 0380   | 691005     | 4   | SCREW, Hex Washer Head                  |
| 0390   | 703463     | 8   | NUT, Flange Nylock , 1/4-20             |
| 0400   | 703440     | 1   | BOLT, Carriage, 1/4-20 x 3/4            |
| 0410   | 7012080SM  | 2   | CABLE TIE                               |
| 0420   | 1960093SM  | 1   | NUT, Push Pal, 3/8                      |
| 0430   | 1714084SM  | 1   | KNOB                                    |
| 0440   | 1751224YP  | 1   | CRANK, Chute Handle                     |
| 0450   | 703173     | 1   | ROD & YOKE ASSEMBLY                     |
| 0460   | 578060MA   | 1   | PIN, 3/8 x 1                            |
| 0470   | 578063MA   | 1   | BLOCK, Universal Pivot                  |
| 0480   | 703464     | 1   | PIN, Cotter, 1/16 x 1/2                 |
| 0490   | 1733611SM  | 1   | YOKE ADAPTER ASSEMBLY                   |
| 0510   | 578309MA   | 1   | PIN, Clevis, 1/4 x 1.09                 |
| 0530   | 1733475SM  | 1   | GUARD, Chute                            |
| 0540   | 1752883YP  | 1   | BRACKET, Chute Guard                    |
| 0550   | 1738174YP  | 2   | GROMMET                                 |
| 0560   | 1960140SM  | 2   | NUT, Push, 3/16                         |
| 0570   | 704130     | 2   | SCREW, Hex Head, Taptite, 1/4-20 x 1/2  |



0050



0050



0050



0020



0010

|   |  |  |
|---|--|--|
| <b>⚠ DANGER</b>   |  |  |
| <b>Amputation Hazard</b><br>• Contact with auger will cause serious injury.<br>• Keep hands, feet and clothing away.<br>• Keep bystanders away. |  | <b>Risque d'amputation</b><br>• Tout contact avec la tarière provoquera de graves blessures.<br>• Tenir vos pieds, vos mains et vêtements à distance.<br>• Tenir les spectateurs à distance. |
| <b>Thrown Objects Hazard</b><br>• Never direct discharge chute towards persons or property.   |  | <b>Danger objets projetés</b><br>• Ne jamais diriger la chute en direction des personnes ou biens matériels.   |
| Read the operator's manual for operating and safety instructions.   |  | Lire les consignes de sécurité et d'utilisation dans le manuel d'utilisation.  |
| Shut off engine and remove key before performing maintenance or repair work.  |  | Arrêter le moteur et retirer la clé avant d'effectuer tout entretien ou toute réparation.  |

0020

|  |  |
|--|--|
| <b>⚠ DANGER</b>  |  |
| <b>Amputation hazard</b>   |  |
| Contact with moving parts inside chute will cause serious injury.<br>• Shut off engine before unclogging discharge chute.<br>• Use clean-out tool, not hands!  |  |
| <b>Risque d'amputation</b>   |  |
| Tout contact avec des pièces en mouvement à l'intérieur de la goulotte provoquera de graves blessures.<br>• Arrêter le moteur avant de dégager la goulotte d'éjection.<br>• Utiliser l'outil de dégagement, pas les mains! |  |

0010

Do not shift with the engine stopped.  
Ne pas changer de vitesse avec le moteur à l'arrêt.

0290



0030



0040

**Simplicity**  
0150  
**Simplicity**  
0160

**MODEL #**  
0070



0110 / 0140



0080

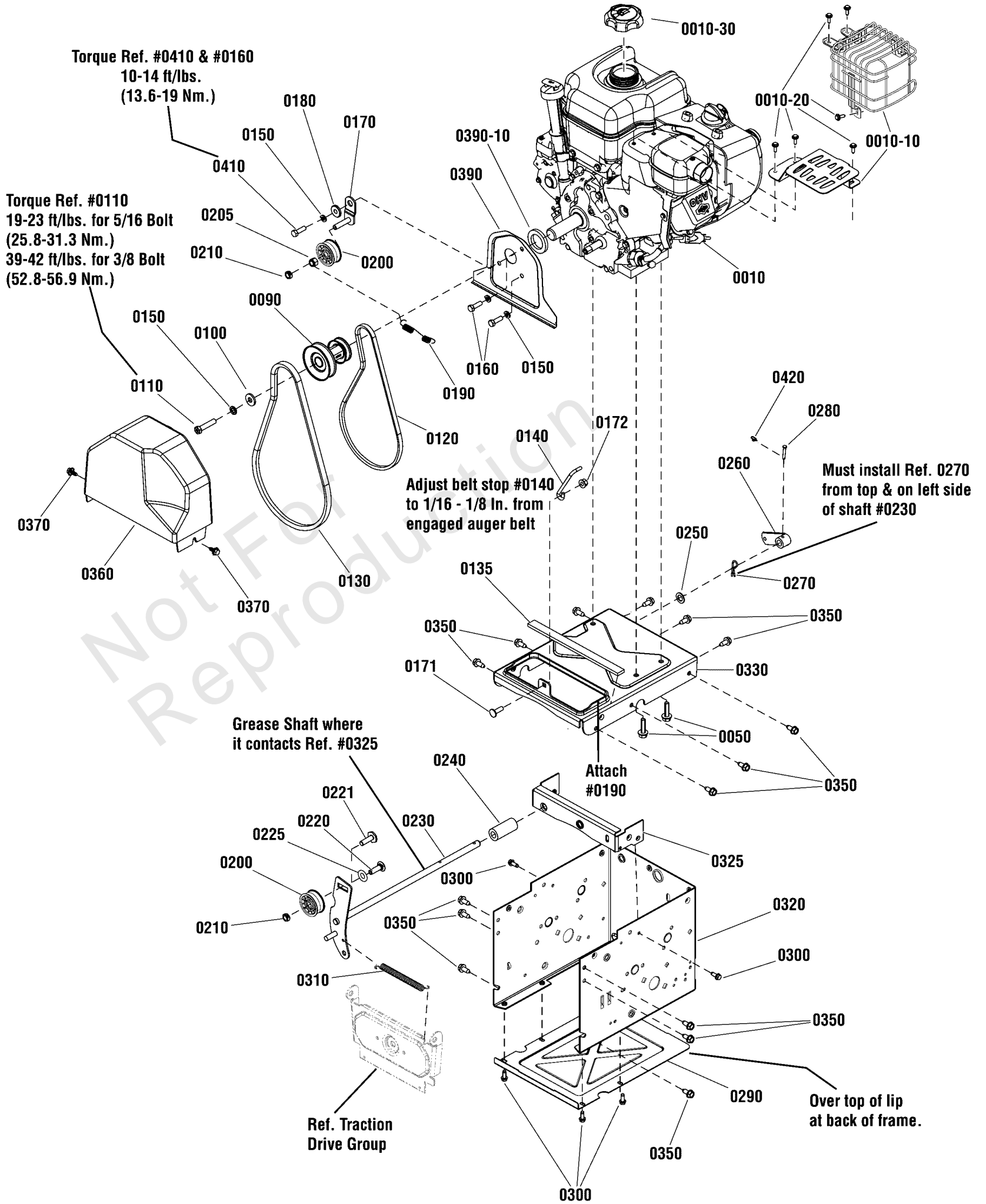
## Decals Group

| REF NO | PART NO   | QTY | DESCRIPTION  |
|--------|-----------|-----|--|
| 0010   | 1737865YP | 1   | DECAL, Danger Chute, FR/ENG  |
| 0020   | 1737867YP | 1   | DECAL, Danger Auger, No Text   |
| 0020   | 1737866YP | 1   | DECAL, Danger Foot, FR/ENG   |
| 0030   | 1753133YP | 1   | DECAL, Auger Control   |
| 0040   | 1753134YP | 1   | DECAL, Traction Control  |
| 0050   | 1751581YP | 1   | DECAL, Operator Controls<br>-(Used on Export Models)                     |
| 0050   | 1755155YP | 1   | DECAL, Operator Controls<br>-(Use on Domestic Model)                     |
| 0050   | 1755277YP | 1   | DECAL, Operator Controls, Free Hand Operation<br>-(Use on Model 1696235) |
| 0060   | 1751582YP | 1   | DECAL, Gear Shift  |
| 0010   | 1727207SM | 1   | DECAL, Chute Warning, No Text  |
| 0070   | 1754673YP | 1   | DECAL, Model, 924E   |
| 0070   | 1754850YP | 1   | DECAL, Model, M924E  |
| 0070   | 1754851YP | 1   | DECAL, Model, M1227E   |
| 0080   | 1754671YP | 1   | DECAL, Logo  |
| 0110   | 1733247SM | 1   | DECAL, Logo, Swoosh, 25"   |
| 0140   | 1733071SM | 1   | DECAL, Logo, Swoosh, 23.1"   |
| 0150   | 1755725YP | 1   | DECAL, Logo<br>-(Use on Model 1696234-02)                                |
| 0160   | 1757673YP | 1   | DECAL, Logo, 10.47"<br>-(Use on Model 1696234-02)                        |
| 0290   | 1755585YP | 1   | DECAL, Do Not Shift<br>-(Use on Model 1696235)                           |

# Engine & Frame Group - 9TP

Note: Unless noted otherwise, use the standard torque specifications

Mfg. No: 1696202-00



## Engine & Frame Group - 9TP

| REF NO  | PART NO        | QTY | DESCRIPTION   |
|---------|----------------|-----|---|
| 0010    | 12D107-0166-F8 | 1   | * ENGINE, 900 Series Briggs & Stratton, Export                  |
| 0010    | 12D107-0163-F8 | 1   | * ENGINE, 900 Series Briggs & Stratton, North America           |
| 0010-10 | 793193         | 1   | * GUARD, Muffler, Wire  |
| 0010-10 | 797003         | 1   | * GUARD, Muffler, Plate<br>-(Use on Domestic Models Only)       |
| 0010-20 | 699854         | 2   | * SCREW, Muffler Guard  |
| 0010-30 | 795027         | 1   | * CAP, Fuel   |
| 0010-30 | 792647         | 1   | * CAP, Fuel<br>-(Use on Domestic Models Only)                   |
| 0050    | 75246GS        | 4   | SCREW, Hex Head, Trilobular, 3/8-16 x 1-1/4                     |
| 0090    | 1739514YP      | 1   | PULLEY ASSEMBLY   |
| 0100    | 703298         | 3   | WASHER, 5/16  |
| 0110    | 7091513YP      | 1   | CAPSCREW, Hex Head, 5/16-24 x 1-3/4 G5                          |
| 0120    | 1733324SM      | 1   | V-BELT, Traction Drive, 3L, 33.13                               |
| 0130    | 585416MA       | 1   | BELT, Auger, V4L 38.10 MF 05-10B                                |
| 0135    | 1750314YP      | 1   | SEAL, Strip   |
| 0140    | 1737377YP      | 1   | STOP, Belt  |
| 0150    | 703116         | 4   | LOCKWASHER, Split, 5/16   |
| 0160    | 703336         | 2   | CAPSCREW, Hex Head, 5/16-24 x 3/4, G5                           |
| 0170    | 1739846YP      | 1   | BRACKET, Idler  |
| 0171    | 1931335SM      | 1   | BOLT, Carriage, Short Neck, 5/16-18 x 1                         |
| 0172    | 703222         | 1   | NUT, Hex KEPS, 5/16-18  |
| 0180    | 1501065MA      | 1   | BUSHING, Idler Bracket  |
| 0190    | 165X164MA      | 1   | SPRING, Extension, Idler  |
| 0200    | 1502120MA      | 2   | IDLER   |
| 0205    | 1919439SM      | 1   | NUT, Nylock, 3/8-16,G5  |
| 0210    | 703230         | 2   | NUT, Center Lock, 3/8-16  |
| 0220    | 703227         | 1   | BOLT, Carriage, 3/8-16 x 1-1/4                                  |
| 0221    | 1960032SM      | 1   | SCREW, Hex Head, 3/8-16 x 1 1/4                                 |
| 0225    | 1670971SM      | 1   | WASHER, Thrust, 1/2 ID x 1 OD<br>-(Use with Ref# 220 bolt only) |
| 0230    | 1739574YP      | 1   | AUGER IDLER   |
| 0240    | 1739964YP      | 1   | SPACER, Auger Bracket   |
| 0250    | 1960027SM      | 1   | WASHER, 1/2 ID x 7/8 OD   |
| 0260    | 1733451SM      | 1   | ARM, Control  |
| 0270    | 703300         | 1   | PIN, Hair, 3/32 x 1 5/8   |
| 0280    | 703313         | 1   | PIN, Clevis   |
| 0290    | 1737221BMYP    | 1   | PANEL, Bottom   |
| 0300    | 703054         | 6   | SCREW, Hex Washer Head, 1/4-20 x 5/8                            |
| 0310    | 165X159MA      | 1   | SPRING, Extension, Auger, 5.13"                                 |
| 0320    | 1739107CYP     | 1   | FRAME BOX   |
| 0325    | 1739093AYP     | 1   | ANGLE, Auger & Traction   |
| 0330    | 1754138CYP     | 1   | PLATE, Engine Mount   |
| 0350    | 703228         | 15  | SCREW, Washer Head Taptite, 5/16-18 X 3/4                       |
| 0360    | 1750551YP      | 1   | COVER, Belt   |
| 0370    | 1751355YP      | 2   | SCREW, Hex Washer Head, Tap, 1/4-20 x 3/4                       |
| 0390    | 1733868BMYP    | 1   | PLATE, Seal   |
| 0390-10 | 1733898SM      | 1   | SEAL, Foam  |
| 0410    | 703301         | 1   | BOLT, Hex, 5/16-24 x 1.   |

### Footnotes:

Note:\* To verify your specific engine model, please reference the ID Tag located on your engine. See your local Briggs & Stratton distributor for parts and service.



## Engine & Frame Group - 9TP

---

| REF NO | PART NO   | QTY | DESCRIPTION                 |
|--------|-----------|-----|-----------------------------|
| 0420   | 7023590SM | 1   | PIN, Cotter, Self Lock, 1/4 |

---

Not For  
Reproduction

---

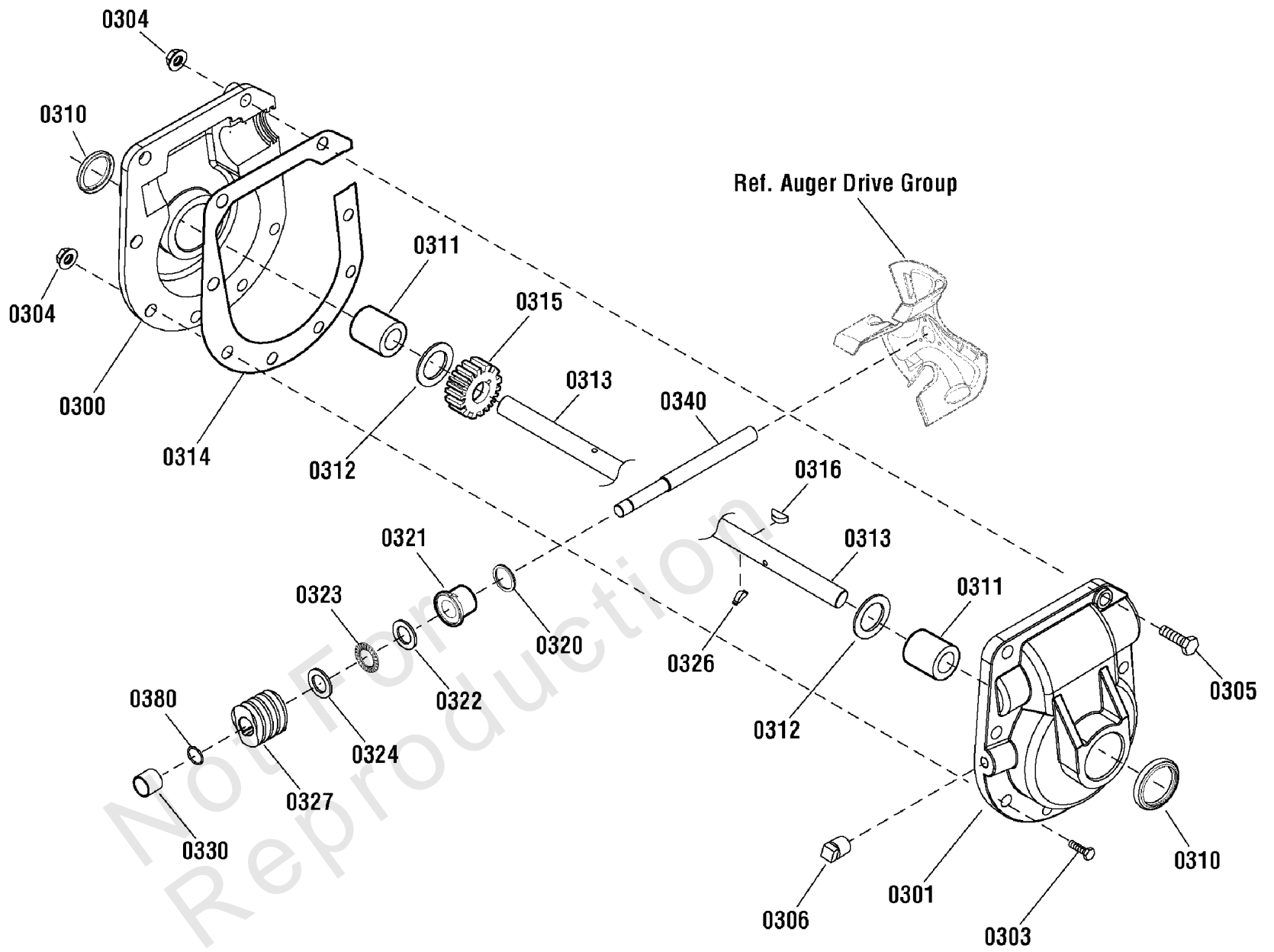
**Footnotes:**

Note:\* To verify your specific engine model, please reference the ID Tag located on your engine. See your local Briggs & Stratton distributor for parts and service.

# Gear Case Assembly (1752221PH\_1753072SVC\_1752087PH\_1753073SVC)

Note: Unless noted otherwise, use the standard torque specifications

Mfg. No: 1696202-00





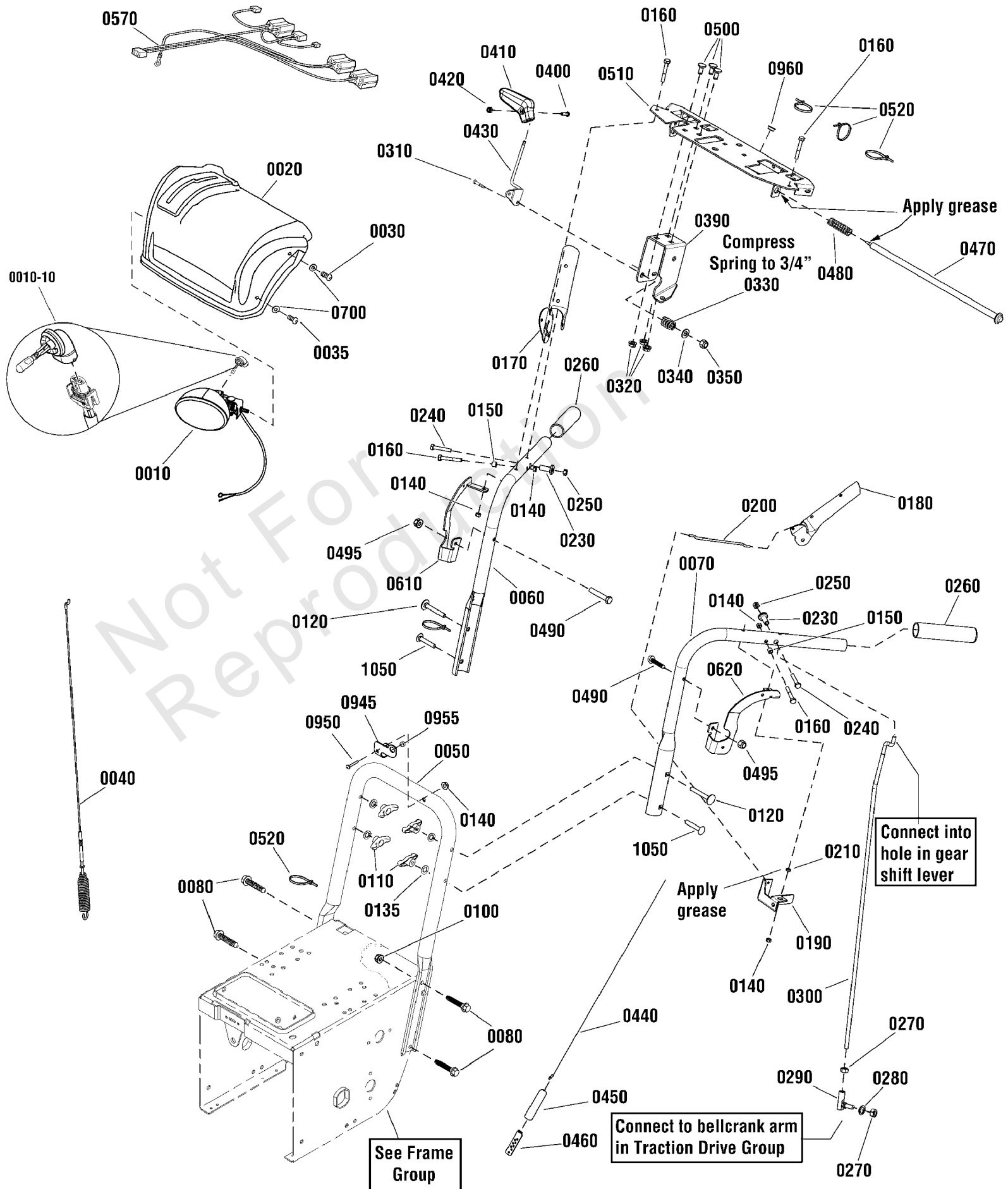
## Gear Case Assembly (1752221PH\_1753072SVC\_1752087PH\_1753073SVC)

| REF NO | PART NO   | QTY | DESCRIPTION                             |
|--------|-----------|-----|---|
| 0300   | 780390MA  | 1   | CASE, Gear, RH                          |
| 0301   | 895MA     | 1   | CASE, Gear, LH                          |
| 0303   | 910828MA  | 7   | CAPSCREW, Hex, 5/16-24 X 1              |
| 0304   | 71100MA   | 8   | NUT, Hex Flange, Serrated, 5/16-24      |
| 0305   | 330434MA  | 1   | CAPSCREW, Hex Head, 5/16-24 x 1-1/2     |
| 0306   | 53749MA   | 1   | PLUG, Pipe, 1/4-18                      |
| 0310   | 780151MA  | 2   | SEAL, Oil                               |
| 0311   | 53743MA   | 2   | BEARING, Sleeve, 1 x 1-1/4 x 1          |
| 0312   | 53748MA   | 2   | WASHER, Flat, 1                         |
| 0313   | 1739058YP | 1   | SHAFT, Auger Out, 24"                   |
| 0314   | 8971MA    | 1   | GASKET                                  |
| 0315   | 1752500YP | 1   | GEAR, Worm                              |
| 0316   | 73905MA   | 1   | KEY, Woodruf                            |
| 0320   | 53737MA   | 1   | RING, Quad                              |
| 0321   | 583126MA  | 1   | BEARING, Flange, 3/4ID x 1-1/8 OD       |
| 0322   | 48275MA   | 1   | WASHER, Thrust                          |
| 0323   | 50684MA   | 1   | BEARING, Roll Thrust, 3/4 ID x 1-1/4 OD |
| 0324   | 48275MA   | 1   | WASHER, Thrust                          |
| 0326   | 50795MA   | 1   | KEY, Hi-Pro                             |
| 0327   | 53732MA   | 1   | WORMGEAR                                |
| 0330   | 53731MA   | 1   | BEARING, Sleeve, 3/4 ID x 7/8 OD        |
| 0340   | 1751535YP | 1   | SHAFT, Impeller                         |
| 0380   | 1752515YP | 1   | RING, Retaining, 3/4"                   |

# Handles & Controls Group - Dash Mount Crank

Note: Unless noted otherwise, use the standard torque specifications

Mfg. No: 1696202-00



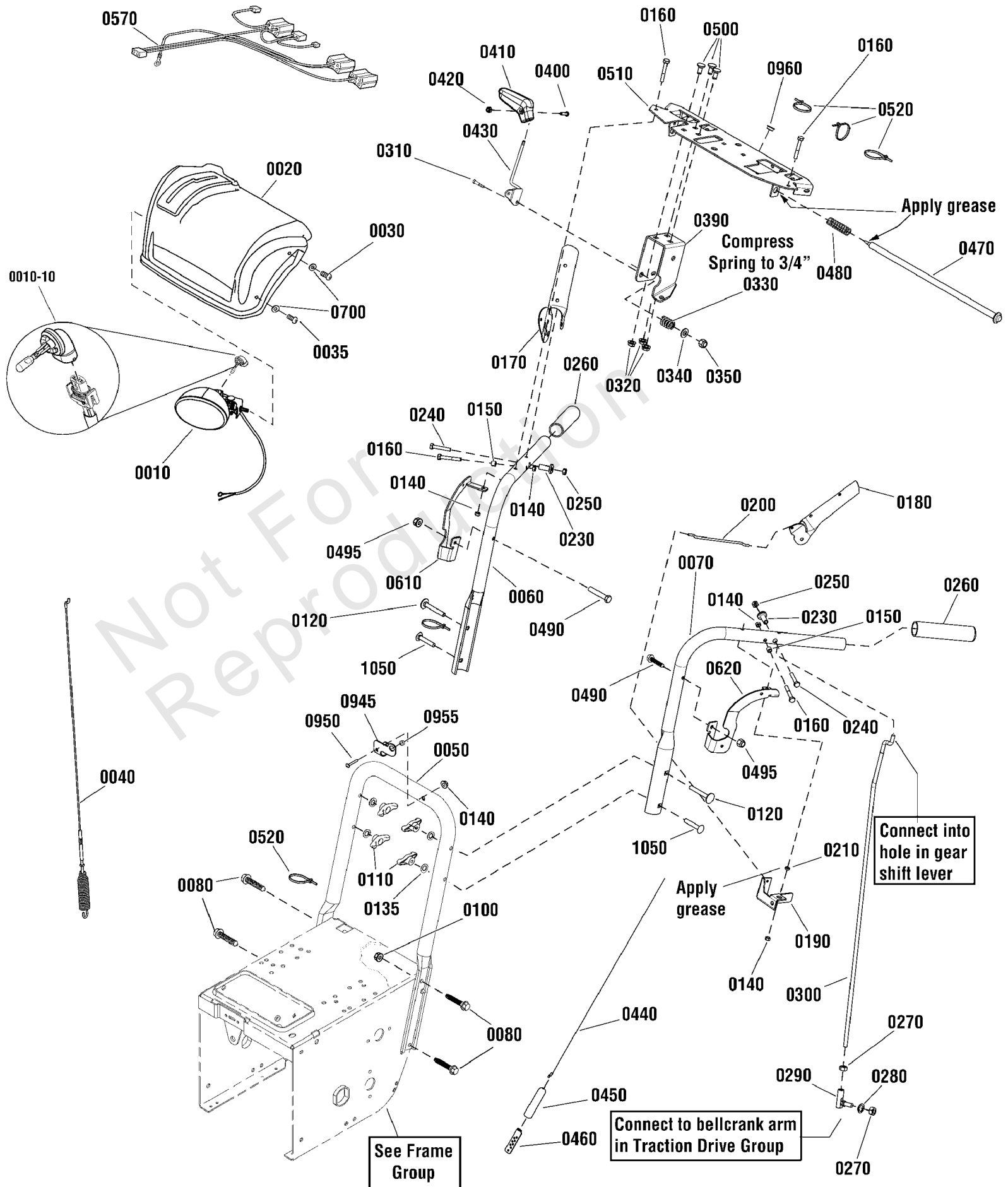
## Handles & Controls Group - Dash Mount Crank

| REF NO  | PART NO     | QTY | DESCRIPTION                                     |
|---------|-------------|-----|---|
| 0010    | 1737965YP   | 1   | HEADLIGHT, Oval<br>-(Includes Ref. No. 0010-10) |
| 0010-10 | -----       | 1   | * BULB, Headlight, Halogen, 881-12V 27W         |
| 0020    | 1751639CYP  | 1   | COVER, Panel                                    |
| 0030    | 1960556SM   | 4   | SCREW, Pan Head Torx, 1/4-20 x 3/4              |
| 0035    | 1960715SM   | 1   | SCREW, Truss Head Torx, 1/4-20 x 3/4            |
| 0040    | 703221      | 1   | CABLE & SPRING ASSEMBLY                         |
| 0050    | 1737274AYP  | 1   | HANDLE, Lower                                   |
| 0060    | 1734587ASM  | 1   | HANDLE, Upper, RH                               |
| 0070    | 1734586ASM  | 1   | HANDLE, Upper, LH                               |
| 0080    | 1737687YP   | 4   | BOLT, Carriage, FH, 5/16-18 x 3/4, G5           |
| 0100    | 703222      | 4   | NUT, Hex KEPS, 5/16-18                          |
| 0110    | 703065      | 4   | KNOB, Wing, 5/16-18                             |
| 0120    | 703168      | 2   | BOLT, 5/16-18 x 2-1/4, Carriage, Curved Head    |
| 0135    | 7090391SM   | 4   | WASHER, Internal Lock, 5/16                     |
| 0140    | 15X145MA    | 6   | NUT, Nylock, 1/4-20                             |
| 0150    | 703137      | 2   | SPACER, 1/4 ID x 3/8OD x .330"                  |
| 0160    | 7091003YP   | 4   | CAPSCREW, Hex Head, 1/4-20 x 1-3/4, G5          |
| 0170    | 1739783AYP  | 1   | LEVER, Clutch, RH                               |
| 0180    | 1739782AYP  | 1   | LEVER, Clutch, LH                               |
| 0190    | 1733505BMYP | 1   | BRACKET, Pivot, Free Hand                       |
| 0200    | 1736360YP   | 1   | ROD, Hold Down                                  |
| 0210    | 703124      | 1   | SPACER, 1/4 x .118, G5                          |
| 0230    | 703223      | 2   | SPACER, Stepped                                 |
| 0240    | 1753529YP   | 2   | SCREW, Hex Washer Head, Shoulder 1/4-20         |
| 0250    | 703412      | 2   | NUT, Nylock, #10-24                             |
| 0260    | 1726317SM   | 2   | GRIP  |
| 0270    | 703331      | 2   | NUT, 5/16-24, GR5                               |
| 0280    | 703116      | 1   | LOCKWASHER, Split, 5/16                         |
| 0290    | 703224      | 1   | BALL JOINT                                      |
| 0300    | 1751543YP   | 1   | ROD, Speed Control                              |
| 0310    | 703589      | 1   | CAPSCREW, Hex Head, 3/8-16 x 2, G5              |
| 0320    | 703409      | 3   | NUT, Serrated Lock Flange, 5/16-18              |
| 0330    | 50786MA     | 1   | SPRING, 3/4"                                    |
| 0340    | 1918266SM   | 1   | WASHER, 3/8                                     |
| 0350    | 703117      | 1   | NUT, Hex Lock, ESNA, 3/8-16                     |
| 0390    | 1737684YP   | 1   | BRACKET, Controls                               |
| 0400    | 1960589SM   | 1   | SCREW, Phillips, #10-24 x 3/4                   |
| 0410    | 1733192SM   | 1   | KNOB, Speed                                     |
| 0420    | 703412      | 1   | NUT, Nylock, #10-24                             |
| 0430    | 703047      | 1   | LEVER, Speed                                    |
| 0440    | 1502113MA   | 1   | CABLE, Drive                                    |
| 0450    | 308146MA    | 1   | BOOT, Spring End Cover                          |
| 0460    | 313441MA    | 1   | BRACKET, Cable Adjust                           |
| 0470    | 1736363YP   | 1   | ROD & SPRING ASSEMBLY                           |
| 0480    | 2108360SM   | 1   | SPRING, Compression, 2-1/4"                     |
| 0490    | 7091003YP   | 2   | CAPSCREW, Hex Head, 1/4-20 x 1-3/4, G5          |
| 0495    | 703463      | 2   | NUT, Flange Nylock , 1/4-20<br>-(5025391)       |
| 0500    | 703225      | 3   | BOLT, Carriage, 5/16-18 x 3/4                   |
| 0510    | 1739500BMYP | 1   | SUPPORT, Dash                                   |
| 0520    | 1701011SM   | 5   | CABLE TIE                                       |

# Handles & Controls Group - Dash Mount Crank

Note: Unless noted otherwise, use the standard torque specifications

Mfg. No: 1696202-00



## ***Handles & Controls Group - Dash Mount Crank***

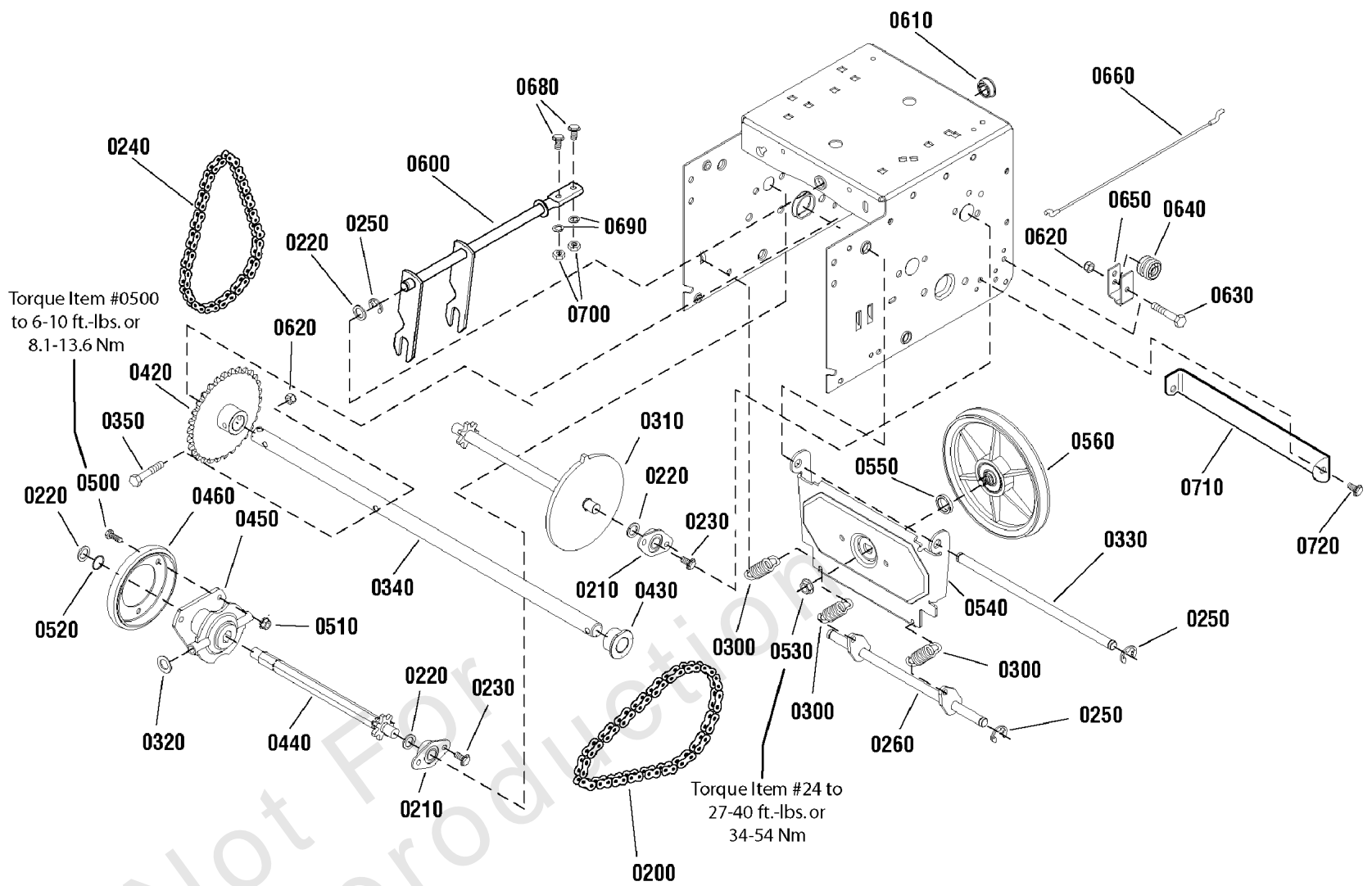
| <b>REF NO</b> | <b>PART NO</b> | <b>QTY</b> | <b>DESCRIPTION</b>               |
|---------------|----------------|------------|----------------------------------|
| 0570          | 1737446YP      | 1          | HARNESS, Wiring                  |
| 0610          | 1750522BMYP    | 1          | BRACKET, Mounting, RH            |
| 0620          | 1750521BMYP    | 1          | BRACKET, Mounting, LH            |
| 0700          | 703332         | 3          | WASHER, Flat, 1/4                |
| 0945          | 1735589YP      | 1          | BRACKET, Rod Support             |
| 0950          | 1931323SM      | 1          | BOLT, Carriage, 1/4-20 x 2, G5   |
| 0955          | 1501874MA      | 1          | BUSHING, Chute Crank             |
| 0960          | 1667588SM      | 1          | BUSHING, Nylon, 3/8 ID x 7/16 OD |
| 1050          | 703059         | 2          | BOLT, Carriage, 5/16-18 x 2      |

Not For Reproduction

# Traction Drive Group - Standard

Note: Unless noted otherwise, use the standard torque specifications

Mfg. No: 1696202-00



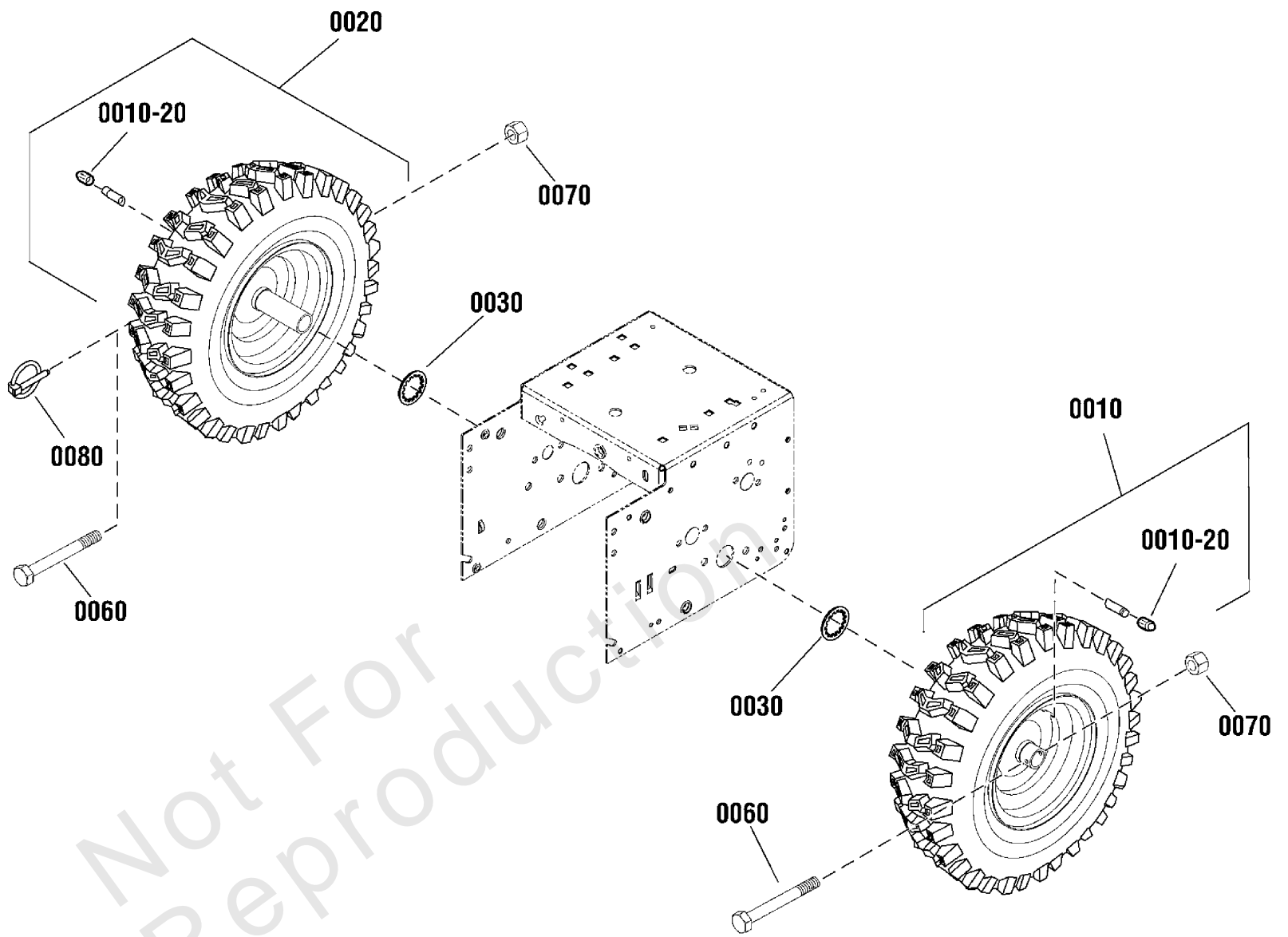
## Traction Drive Group - Standard

| REF NO | PART NO     | QTY | DESCRIPTION                                      |
|--------|-------------|-----|--|
| 0200   | 579851MA    | 1   | CHAIN, Roller, #420 x 19.00                      |
| 0210   | 334163MA    | 4   | BEARING AND RETAINER ASSEMBLY                    |
| 0220   | 703337      | 5   | WASHER, Flat, 1/2                                |
| 0230   | 1924856SM   | 8   | SCREW, Hex Washer Head Taptite, 5/16-18 x 1/2    |
| 0240   | 579868MA    | 1   | CHAIN, Roller, #420 x 18.00                      |
| 0250   | 11X30MA     | 5   | RETAINER, Ring, 7/16                             |
| 0260   | 703328      | 1   | SPRING LINK ASSEMBLY                             |
| 0300   | 1736469YP   | 3   | SPRING, Extension                                |
| 0310   | 1501090MA   | 1   | SPROCKET, Set                                    |
| 0320   | 1960027SM   | 2   | WASHER, 1/2                                      |
| 0330   | 1501092YZMA | 1   | AXLE, Swing Plate                                |
| 0340   | 1501563MA   | 1   | AXLE, 16"  |
| 0350   | 01X193MA    | 1   | SCREW, 1/4 - 20 x 1-3/4                          |
| 0420   | 1501089MA   | 1   | SPROCKET, Axle                                   |
| 0430   | 1501114MA   | 2   | BEARING, Axle                                    |
| 0440   | 1501100MA   | 1   | HEX SHAFT & SPROCKET ASSEMBLY                    |
| 0450   | 1739282YP   | 1   | HUB, Friction Wheel & Bearing                    |
| 0460   | 1501435MA   | 1   | WHEEL, Friction Disc                             |
| 0500   | 1921959SM   | 3   | CAPSCREW, Hex Head 1/4-20 x 5/8 G5               |
| 0510   | 1928372SM   | 3   | NUT, Hex KEPS 1/4-20                             |
| 0520   | 1733326SM   | 1   | RING, Retaining Extension                        |
| 0530   | 15X114MA    | 1   | NUT, Flange Lock, 3/8-24                         |
| 0540   | 1501057YZMA | 1   | PLATE, Swinging                                  |
| 0550   | 1501158MA   | 1   | SPACER, Friction Pulley                          |
| 0560   | 1501115MA   | 1   | FRICITION PULLEY ASSEMBLY                        |
| 0600   | 1501110YZMA | 1   | ASSEMBLY, Speed Selector                         |
| 0610   | 579944MA    | 1   | BEARING, Flange                                  |
| 0620   | 1920397SM   | 2   | NUT, Hex Lock ESNA Light 1/4-20                  |
| 0630   | 1922837SM   | 1   | CAPSCREW, Hex Head, 1/4-20 x 1-1/2 G5            |
| 0640   | 579860MA    | 1   | SPOOL CABLE, Auger Control                       |
| 0650   | 1750398YP   | 1   | BRACKET, Cable Spool                             |
| 0660   | 1750403YP   | 1   | CABLE, Front Drive                               |
| 0680   | 703338      | 2   | BOLT, Hex, 1/4-20 x 5/8                          |
| 0690   | 1916964SM   | 2   | LOCKWASHER, Spring, 1/4-20                       |
| 0700   | 7091576SM   | 2   | NUT, Hex, 1/4-20, G5                             |
| 0710   | 1502030YZMA | 1   | BRACKET, Support                                 |
| 0720   | 1927429SM   | 2   | CAPSCREW, Hex Washer Head, Taptite, 1/4-20 x 5/8 |

# Wheels & Tires Group

Note: Unless noted otherwise, use the standard torque specifications

Mfg. No: 1696202-00





## ***Wheels & Tires Group***

| <b>REF NO</b> | <b>PART NO</b> | <b>QTY</b> | <b>DESCRIPTION</b>   |
|---------------|----------------|------------|--|
| 0010          | 1754486YP      | 1          | WHEEL ASSEMBLY, 15 x 5, LH<br>-(Includes Ref. No. 0010-20)     |
| 0010-20       | 2172353SM      | 2          | VALVE STEM & CAP   |
| 0020          | 1754487YP      | 1          | WHEEL ASSEMBLY, 15 x 5, RH<br>-(Includes Ref. No. 0010-20)     |
| 0030          | 1657528SM      | 2          | RING, Retaining<br>-(Used on 24" Models only)                  |
| 0060          | 577015MA       | 1          | BOLT, Hex Head, 1/4-20 x 1-3/4, G5<br>-(Qty 2 used on 1696235) |
| 0070          | 703232         | 1          | NUT, Nylock, 1/4-20<br>-(Qty 2 used on 1696235)                |
| 0080          | 703226         | 1          | PIN, Klik<br>-(Used on 1696202 & 1696234 only)                 |

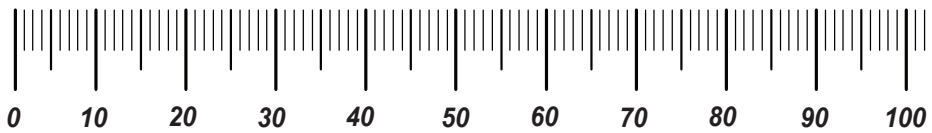
Not For Reproduction

# Hardware Identification & Torque Specifications

| Torque Specification Chart                             |           |      |           |      |            |      |            |      |
|--|-----------|------|-----------|------|------------|------|------------|------|
| FOR STANDARD METRIC MACHINE HARDWARE (Tolerance ± 20%) |           |      |           |      |            |      |            |      |
| Property Class   | 5.6       |      | 8.8       |      | 10.9       |      | 12.9       |      |
|  | Class 5.6 |      | Class 8.8 |      | Class 10.9 |      | Class 12.9 |      |
| Size Of Hardware                                       | in/lbs    | Nm.  | in/lbs    | Nm.  | in/lbs     | Nm.  | in/lbs     | Nm.  |
|  | ft/lbs    |      | ft/lbs    |      | ft/lbs     |      | ft/lbs     |      |
| M3   | 5.88      | .56  | 13.44     | 1.28 | 19.2       | 1.80 | 22.92      | 2.15 |
| M4   | 13.44     | 1.28 | 30.72     | 2.90 | 43.44      | 4.10 | 52.56      | 4.95 |
| M5   | 26.4      | 2.50 | 60.96     | 5.75 | 5.97       | 8.10 | 7.15       | 9.7  |
| M6   | 44.64     | 4.3  | 7.3       | 9.9  | 10.3       | 14   | 12.1       | 16.5 |
| M7   | 5.2       | 7.1  | 12.1      | 16.5 | 16.9       | 23   | 19.9       | 27   |
| M8   | 7.7       | 10.5 | 17.7      | 24   | 25         | 34   | 29         | 40   |
| M10  | 15        | 21   | 35        | 48   | 50         | 67   | 59         | 81   |
| M12  | 26        | 36   | 61        | 83   | 86.2       | 117  | 103        | 140  |
| M14  | 42        | 58   | 101       | 132  | 136        | 185  | 162        | 220  |
| M16  | 64        | 88   | 147       | 200  | 210        | 285  | 250        | 340  |
| M18  | 89        | 121  | 202       | 275  | 287        | 390  | 346        | 470  |
| M20  | 126       | 171  | 290       | 390  | 405        | 550  | 486        | 660  |
| M22  | 169       | 230  | 390       | 530  | 559        | 745  | 656        | 890  |
| M24  | 217       | 295  | 497       | 375  | 708        | 960  | 840        | 1140 |
| M27  | 320       | 435  | 733       | 995  | 1032       | 1400 | 1239       | 1680 |
| M30  | 435       | 590  | 995       | 1350 | 1401       | 1900 | 1681       | 2280 |
| M33  | 590       | 800  | 1349      | 1830 | 1902       | 2580 | 2278       | 3090 |
| M36  | 759       | 1030 | 1740      | 2360 | 2441       | 3310 | 2935       | 3980 |
| M39  | 988       | 1340 | 2249      | 3050 | 3163       | 4290 | 3798       | 5150 |

| Torque Specification Chart                      |             |       |             |       |             |         |
|---|-------------|-------|-------------|-------|-------------|---------|
| FOR STANDARD MACHINE HARDWARE (Tolerance ± 20%) |             |       |             |       |             |         |
| Hardware Grade                                  | No Marks    |       | SAE Grade 5 |       | SAE Grade 8 |         |
|   | SAE Grade 2 |       | SAE Grade 5 |       | SAE Grade 8 |         |
| Size Of Hardware                                | in/lbs      | Nm.   | in/lbs      | Nm.   | in/lbs      | Nm.     |
|   | ft/lbs      |       | ft/lbs      |       | ft/lbs      |         |
| 8-32  | 19          | 2.1   | 30          | 3.4   | 41          | 4.6     |
| 8-36  | 20          | 2.3   | 31          | 3.5   | 43          | 4.9     |
| 10-24   | 27          | 3.1   | 43          | 4.9   | 60          | 6.8     |
| 10-32   | 31          | 3.5   | 49          | 5.5   | 68          | 7.7     |
| 1/4-20  | 66          | 7.6   | 8           | 10.9  | 12          | 16.3    |
| 1/4-28  | 76          | 8.6   | 10          | 13.6  | 14          | 19.0    |
| 5/16-18   | 11          | 15.0  | 17          | 23.1  | 25          | 34.0    |
| 5/16-24   | 12          | 16.3  | 19          | 25.8  | 29          | 34.0    |
| 3/8-16  | 20          | 27.2  | 30          | 40.8  | 45          | 61.2    |
| 3/8-24  | 23          | 31.3  | 35          | 47.6  | 50          | 68.0    |
| 7/16-14   | 30          | 40.8  | 50          | 68.0  | 70          | 95.2    |
| 7/16-20   | 35          | 47.6  | 55          | 74.8  | 80          | 108.8   |
| 1/2-13  | 50          | 68.0  | 75          | 102.0 | 110         | 149.6   |
| 1/2-20  | 55          | 74.8  | 90          | 122.4 | 120         | 163.2   |
| 9/16-12   | 65          | 88.4  | 110         | 149.6 | 150         | 204.0   |
| 9/16-18   | 75          | 102.0 | 120         | 163.2 | 170         | 231.2   |
| 5/8-11  | 90          | 122.4 | 150         | 204.0 | 220         | 299.2   |
| 5/8-18  | 100         | 136   | 180         | 244.8 | 240         | 326.4   |
| 3/4-10  | 160         | 217.6 | 260         | 353.6 | 386         | 525.0   |
| 3/4-16  | 180         | 244.8 | 300         | 408.0 | 420         | 571.2   |
| 7/8-9   | 140         | 190.4 | 400         | 544.0 | 600         | 816.0   |
| 7/8-14  | 155         | 210.8 | 440         | 598.4 | 660         | 897.6   |
| 1-8   | 220         | 299.2 | 580         | 788.8 | 900         | 1,244.0 |
| 1-12  | 240         | 326.4 | 640         | 870.4 | 1,000       | 1,360.0 |

The guides and ruler furnished below are designed to help you select the appropriate hardware.



Nut, M8

Thread Diameter (mm)

Inside Diameter (in)      Threads per inch

Nut, 1/2-16



Screw, M8- 1.25 x 25

Thread Diameter (mm)      Distance between threads (mm)      Body Length (mm)

Body Diameter      Threads per inch      Body Length (in)

Screw, 1/2- 16 x 2



## Standard Hardware Sizing

When a washer or nut is identified as 1/2" (M8), this is the *Nominal size*, meaning the *inside diameter* is 1/2 inch (8mm metric thread diameter); if a second number is present it represents the *threads per inch* (distance between threads).

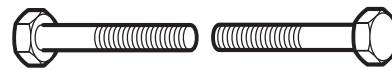
When bolt or capscrew is identified as 1/2 - 16 x 2" (M8 - 1.25 x 50), this means the *Nominal size*, or body diameter is 1/2 inch (8mm metric thread diameter), the second number, 16, represents the *threads per inch*, (*distance between threads*). The final number is the body length of the bolt or screw, 2 inches (50mm).

## NOTES

- These torque values are to be used for all hardware excluding: locknuts, self-tapping screws, thread forming screws, sheet metal screws and socket head setscrews.
- Recommended seating torque values for locknuts:
  - for prevailing torque locknuts - use 65% of grade 5 torques.
  - for flange whizlock nuts and screws - use 135% of grade 5 torques.
- Unless otherwise noted on assembly drawings, all torque values must meet this specification.

## Common Hardware Types

Hex Head Capscrew



Washer



Carriage Bolt



Hex Nut

## Wrench & Fastener Size Guide

|                                  |                                  |                                  |  |                                 |
|----------------------------------|----------------------------------|----------------------------------|--|---------------------------------|
|                                  |                                  |                                  |  |                                 |
| 1/4" Bolt or Nut<br>Wrench—7/16" | 5/16" Bolt or Nut<br>Wrench—1/2" | 3/8" Bolt or Nut<br>Wrench—9/16" | 7/16" Bolt or Nut<br>Wrench (Bolt)—5/8"<br>Wrench (Nut)—11/16" | 1/2" Bolt or Nut<br>Wrench—3/4" |
| M6 Bolt or Nut<br>Wrench—10mm    | M8 Bolt or Nut<br>Wrench—13mm    | M10 Bolt or Nut<br>Wrench—17mm   | M12 Bolt or Nut<br>Wrench—19mm                                 | M14 Bolt or Nut<br>Wrench—22mm  |

