

Medium Duty

24" & 27" Dual Stage Snowthrowers

Snowthrowers

Mfg. No.	Description
----------	-------------

1696235-00	M1227E, 11.5TP 27" Dual Stage Snowthrower
1696202-00	SIM924E, 9TP 24" Dual Stage Snowthrower (CE/Export)
1696234-00	M924E, 9TP 24" Dual Stage Snowthrower

Not for
Reproduction

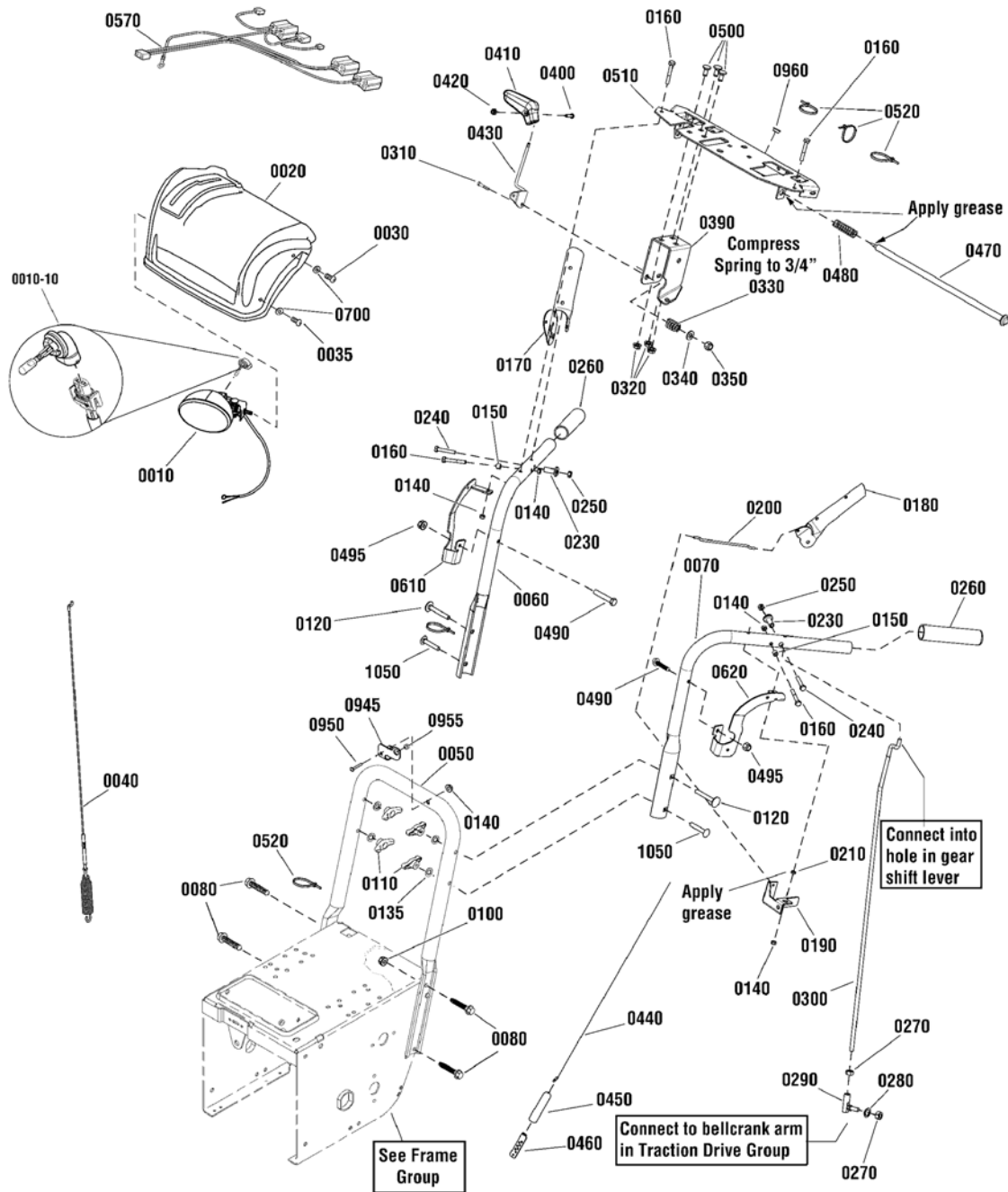
PRODUCT COMPONENTS	PAGES
Handles & Controls Group - Dash Mount Crank	4
Handles & Controls Group - Remote	8
Engine & Frame Group - 11.5TP	12
Engine & Frame Group - 9TP	14
Auger Drive Group	18
Auger Housing Group	20
Traction Drive Group - General Transmission	22
Traction Drive Group - Standard	24
Transmission SERVICE PARTS - General Transmission H2	26
Wheels & Tires Group	28
Decals Group	30
Chute & Rotation Group - Dash Mount Crank	32
Chute & Rotation Group - Remote	34
Gear Case Assembly	36
Torque Specification Chart	Inside Back Cover

Not for
Reproduction

Handles & Controls Group - Dash Mount Crank

2990621

NOTE: Unless noted otherwise,
use the standard hardware torque
specification chart.



The above parts group applies to the following Mfg. Nos.:

1696202-00 - SIM924E

Handles & Controls Group - Dash Mount Crank

REF NO	PART NO.	QTY.	DESCRIPTION
0010	1737965YP	1	HEADLIGHT, Oval (Includes Ref. No. 0010-10)
0010-10	-----	1	* BULB, Headlight, Halogen, 881-12V 27W
0020	1751639CYP	1	COVER, Panel
0030	1960556SM	4	SCREW, Pan Head Torx, 1/4-20 x 3/4
0035	1960715SM	1	SCREW, Truss Head Torx, 1/4-20 x 3/4
0040	703221	1	CABLE & SPRING ASSEMBLY
0050	1737274AYP	1	HANDLE, Lower
0060	1734587ASM	1	HANDLE, Upper, RH
0070	1734586ASM	1	HANDLE, Upper, LH
0080	1737687YP	4	BOLT, Carriage, FH, 5/16-18 x 3/4, G5
0100	703222	4	NUT, Hex KEPS, 5/16-18
0110	703065	4	KNOB, Wing, 5/16-18
0120	703168	2	BOLT, Carriage, Curved Head, 5/16-18 x 2-1/4
0135	7090391SM	4	WASHER, Internal Lock, 5/16
0140	15X145MA	6	NUT, Nylock, 1/4-20
0150	703137	2	SPACER, 1/4 ID x 3/8OD x .330"
0160	7091003YP	4	CAPSCREW, Hex Head, 1/4-20 x 1-3/4, G5
0170	1739783AYP	1	LEVER, Clutch, RH
0180	1739782AYP	1	LEVER, Clutch, LH
0190	1733505BMYP	1	BRACKET, Pivot, Free Hand
0200	1736360YP	1	ROD, Hold Down
0210	703124	1	SPACER, 1/4 x .118, G5
0230	703223	2	SPACER, Stepped
0240	1753529YP	2	SCREW, Hex Washer Head, Shoulder 1/4-20
0250	703412	2	NUT, Nylock, #10-24
0260	1726317SM	2	GRIP
0270	703331	2	NUT, 5/16-24, GR5
0280	703116	1	LOCKWASHER, Split, 5/16
0290	703224	1	BALL JOINT
0300	1751543YP	1	ROD, Speed Control
0310	703589	1	CAPSCREW, Hex Head, 3/8-16 x 2, G5
0320	703409	3	NUT, Flange, 5/16-18, G5
0330	50786MA	1	SPRING, 3/4"
0340	1918266SM	1	WASHER, 3/8
0350	703117	1	NUT, Hex Lock, ESNA, 3/8-16
0390	1737684YP	1	BRACKET, Controls
0400	1960589SM	1	SCREW, Phillips, #10-24 x 3/4
0410	1733192SM	1	KNOB, Speed
0420	703412	1	NUT, Nylock, #10-24
0430	703047	1	LEVER, Speed
0440	1502113MA	1	CABLE, Drive
0450	308146MA	1	BOOT, Spring End Cover
0460	313441MA	1	BRACKET, Cable Adjust
0470	1736363YP	1	ROD & SPRING ASSEMBLY

Footnotes

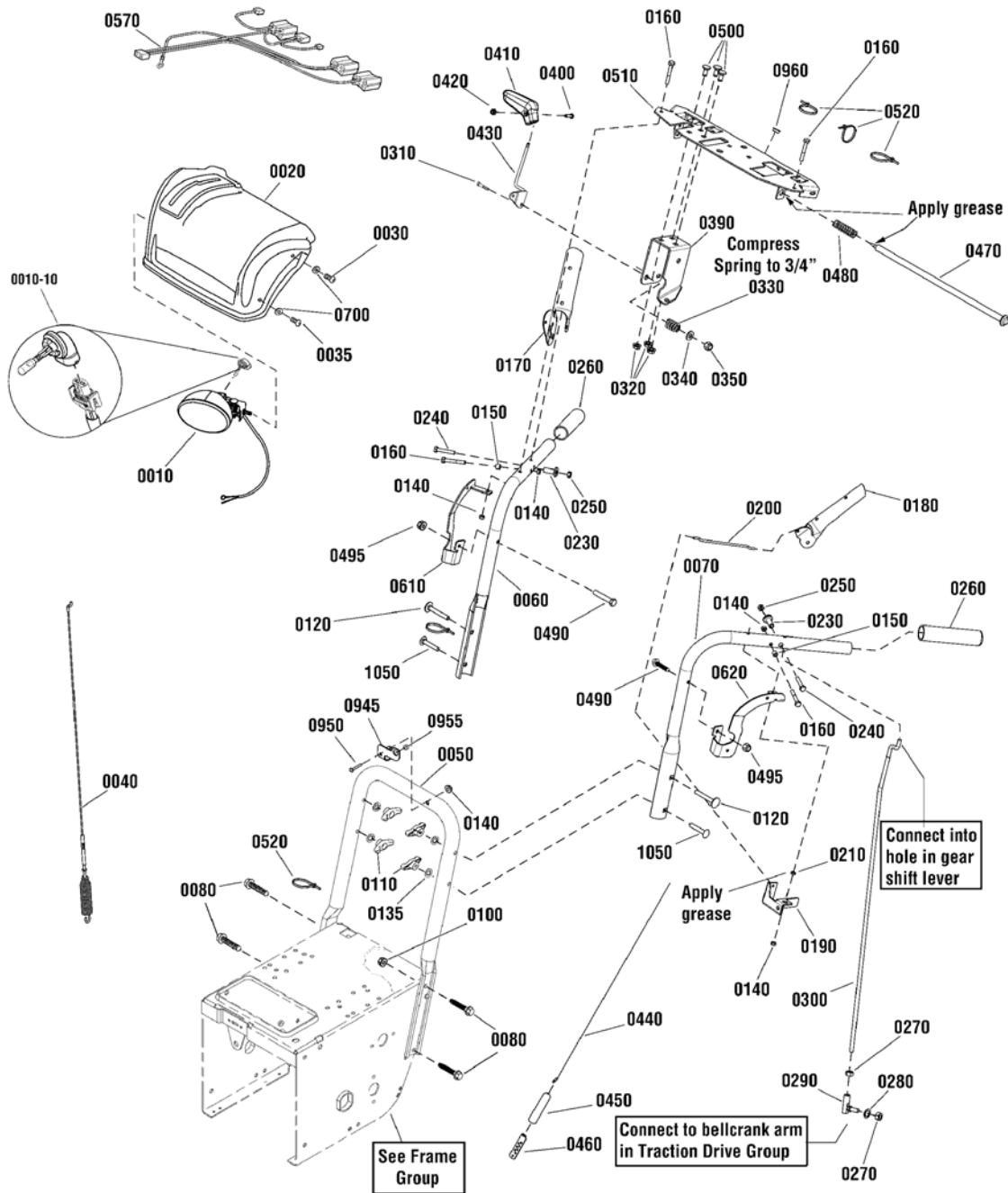
The above parts group applies to the following Mfg. Nos.:

1696202-00 - SIM924E

Handles & Controls Group - Dash Mount Crank

2990621

NOTE: Unless noted otherwise,
use the standard hardware torque
specification chart.



The above parts group applies to the following Mfg. Nos.:

1696202-00 - SIM924E

Handles & Controls Group - Dash Mount Crank

REF NO	PART NO.	QTY.	DESCRIPTION
0480	2108360SM	1	SPRING, Compression, 2-1/4"
0490	7091003YP	2	CAPSCREW, Hex Head, 1/4-20 x 1-3/4, G5
0495	5025391SM	2	NUT, Flange Nylock, 1/4-20, G5
0500	703225	3	BOLT, Carriage, 5/16-18 x 3/4, G5
0510	1739500BMYP	1	SUPPORT, Dash
0520	1701011SM	5	CABLE TIE
0570	1737446YP	1	HARNESS, Wiring
0610	1750522BMYP	1	BRACKET, Mounting, RH
0620	1750521BMYP	1	BRACKET, Mounting, LH
0700	703332	3	WASHER, Flat, 1/4
0945	1735589YP	1	BRACKET, Rod Support
0950	1931323SM	1	BOLT, Carriage, 1/4-20 x 2, G5
0955	1501874MA	1	BUSHING, Chute Crank
0960	1667588SM	1	BUSHING, Nylon, 3/8 ID x 7/16 OD
1050	703059	2	BOLT, Carriage, 5/16-18 x 2

Not for
Reproduction

Footnotes

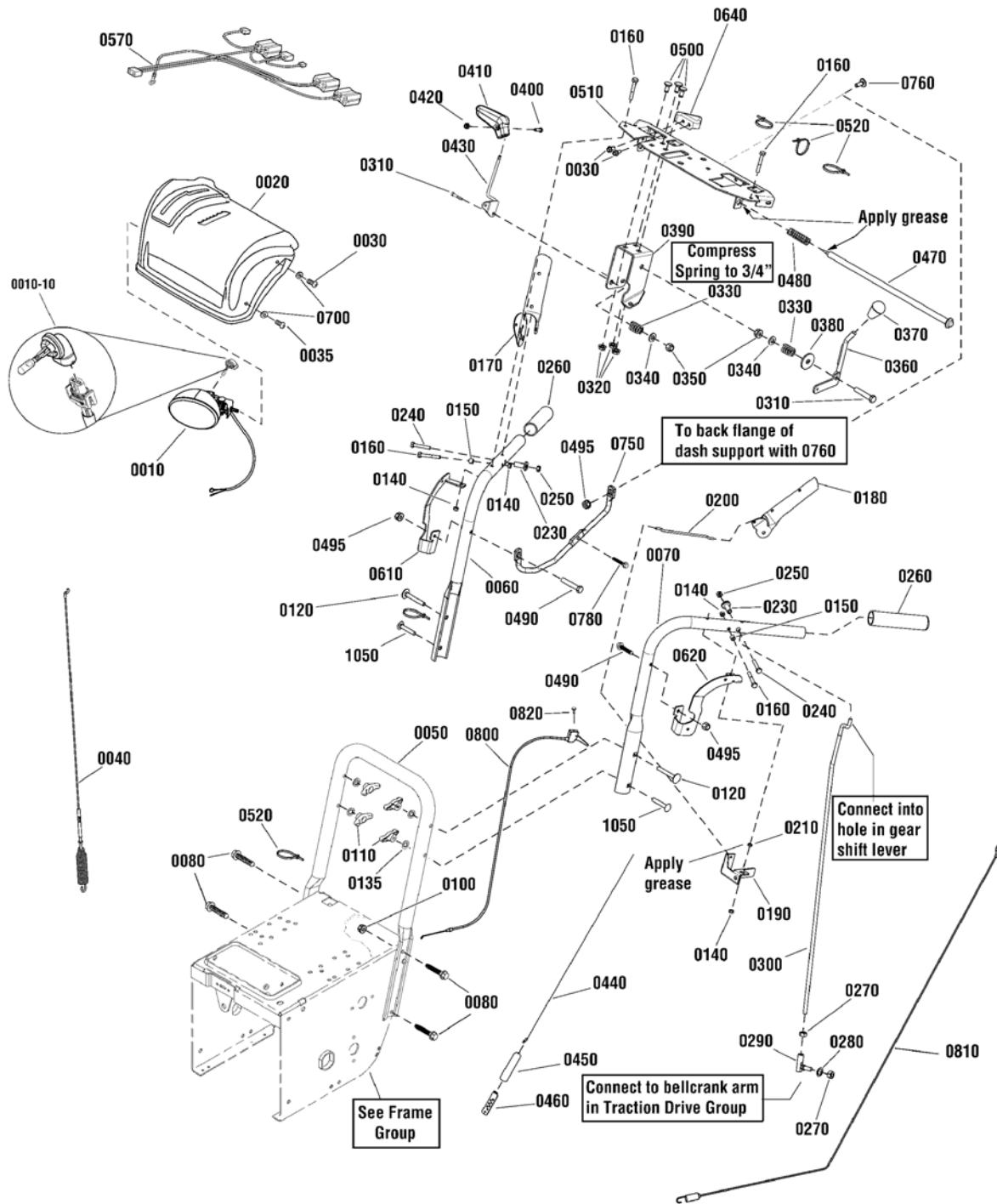
The above parts group applies to the following Mfg. Nos.:

1696202-00 - SIM924E

Handles & Controls Group - Remote

2990788

NOTE: Unless noted otherwise,
use the standard hardware torque
specification chart.



The above parts group applies to the following Mfg. Nos.:

- 1696234-00 - M924E
- 1696235-00 - M1227E

Handles & Controls Group - Remote

REF NO	PART NO.	QTY.	DESCRIPTION
0010	1737965YP	1	HEADLIGHT, Oval (Includes Ref. No. 0010-10)
0010-10	----	1	* BULB, Headlight, Halogen, 881-12V 27W
0020	1750683CYP	1	COVER, Panel
0030	1960556SM	6	SCREW, Pan Head Torx, 1/4-20 x 3/4 (Qty 5 used on 1696235)
0035	1960715SM	1	SCREW, Truss Head Torx, 1/4-20 x 3/4 (Used on 1696235)
0040	703221	1	CABLE & SPRING ASSEMBLY
0050	1737274AYP	1	HANDLE, Lower
0060	1734587ASM	1	HANDLE, Upper, RH (Used on 1696234)
0060	1737531AYP	1	HANDLE, Upper, RH (Used on 1696235)
0070	1734586ASM	1	HANDLE, Upper, LH (Used on 1696234)
0070	1737532AYP	1	HANDLE, Upper, LH (Used on 1696235)
0080	1737687YP	4	BOLT, Carriage, FH, 5/16-18 x 3/4, G5
0100	703222	4	NUT, Hex KEPS, 5/16-18
0110	703065	4	KNOB, Wing, 5/16-18
0120	703168	2	BOLT, Carriage, Curved Head, 5/16-18 x 2-1/4
0135	7090391SM	4	WASHER, Internal Lock, 5/16
0140	15X145MA	4	NUT, Nylock, 1/4-20
0150	703137	2	SPACER, 1/4 ID x 3/8OD x .330"
0160	7091003YP	4	CAPSCREW, Hex Head, 1/4-20 x 1-3/4, G5 (Qty 3 used on 1696235)
0170	1739783AYP	1	LEVER, Clutch, RH
0180	1739782AYP	1	LEVER, Clutch, LH
0190	1733505BM	1	BRACKET, Pivot, Free Hand
0200	1736360YP	1	ROD, Hold Down
0210	703124	1	SPACER, 1/4 x .118, G5
0230	703223	2	SPACER, Stepped
0240	1753529YP	2	SCREW, Hex Washer Head, Shoulder 1/4-20
0250	703412	2	NUT, Nylock, #10-24
0260	1726317SM	2	GRIP
0270	703331	1	NUT, 5/16-24, GR5
0280	703116	1	LOCKWASHER, Split, 5/16
0290	703224	1	BALL JOINT
0300	1751543YP	1	ROD, Speed Control, 25.5" (Used on 1696234)
0300	1737331YP	1	ROD, Speed Control, 22.4" (Used on 1696235)
0310	703589	2	CAPSCREW, Hex Head, 3/8-16 x 2, G5
0320	703409	3	NUT, Flange, 5/16-18, G5
0330	50786MA	2	SPRING, 3/4"
0340	1918266SM	2	WASHER, 3/8
0350	1919439SM	2	NUT, Hex Lock, ESNA, 3/8-16
0360	1736192YP	1	LEVER, Deflector Control
0370	1732470SM	1	KNOB, 3/8-16
0380	703591	1	WASHER, .406
0390	1737684YP	1	BRACKET, Controls
0400	1960589SM	1	SCREW, Phillips, #10-24 x 3/4
0410	1733192SM	1	KNOB, Speed

Footnotes

The above parts group applies to the following Mfg. Nos.:

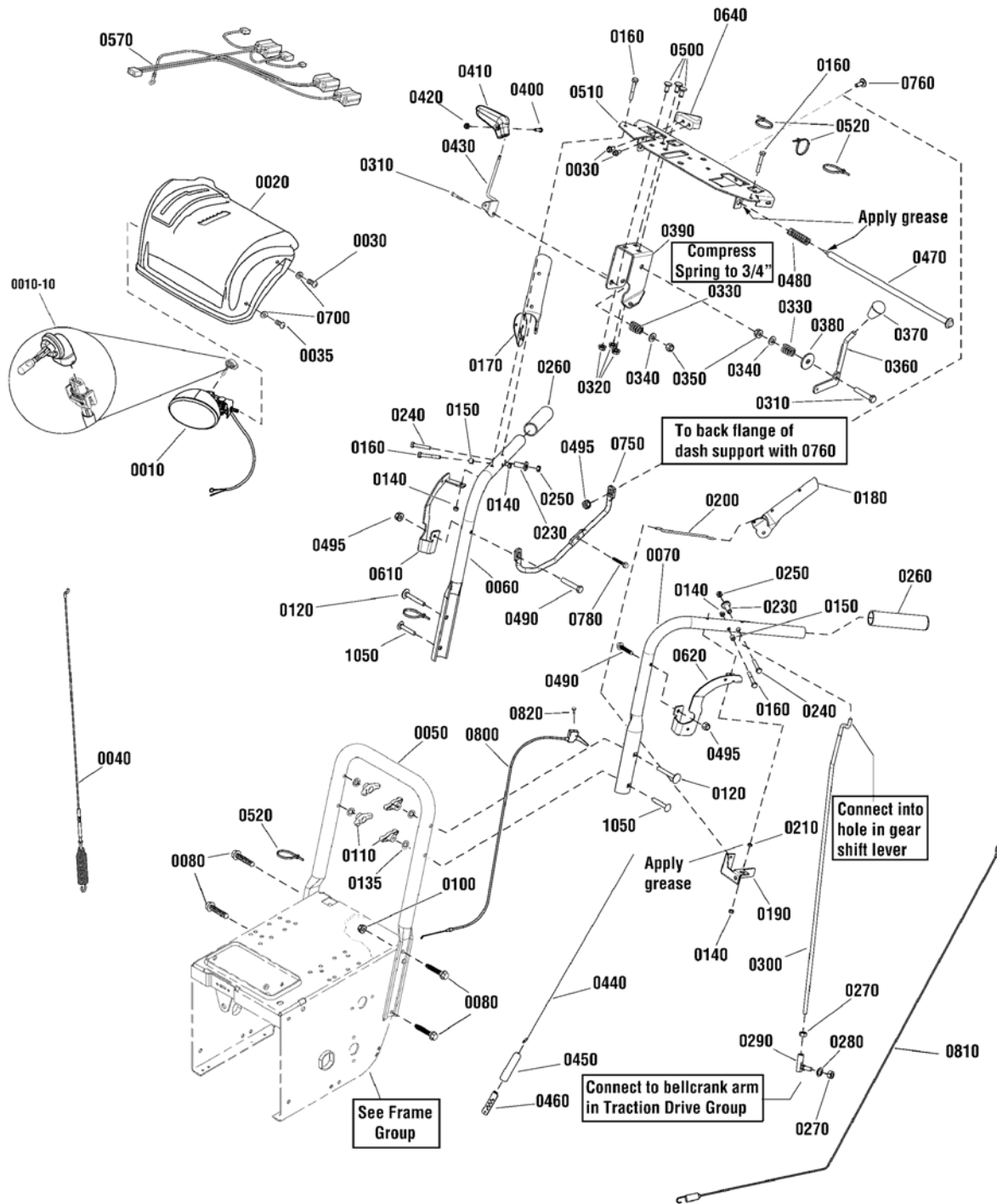
1696234-00 - M924E

1696235-00 - M1227E

Handles & Controls Group - Remote

2990788

NOTE: Unless noted otherwise,
use the standard hardware torque
specification chart.



The above parts group applies to the following Mfg. Nos.:

- 1696234-00 - M924E
- 1696235-00 - M1227E

Handles & Controls Group - Remote

REF NO	PART NO.	QTY.	DESCRIPTION
0420	703412	1	NUT, Nylock, #10-24
0430	703047	1	LEVER, Speed
0440	1502113MA	1	CABLE, Drive (Used on 1696234)
0450	308146MA	1	BOOT, Spring End Cover
0460	313441MA	1	BRACKET, Cable Adjuster
0470	1736363YP	1	ROD & SPRING ASSEMBLY
0480	2108360SM	1	SPRING, Compression, 2-1/4"
0490	703054	3	CAPSCREW, Hex Head, 1/4-20 x 5/8 (Used on 1696234)
0495	703463	4	NUT, Flange Nylock, 1/4-20, G5 (Qty 1 used on 1696234)
0500	703225	3	BOLT, Carriage, 5/16-18 x 3/4, G5
0510	1739500BMYP	1	SUPPORT, Dash
0520	1701011SM	5	CABLE TIE
0570	1755059YP	1	HARNESS, Wiring
0610	1750522BMYP	1	BRACKET, Mounting, RH
0620	1750521BMYP	1	BRACKET, Mounting, LH
0640	1739483AYP	1	POD, Chute Rotation
0700	703332	3	WASHER, Flat, 1/4
0750	1737552YP	1	BRACE (used on 1696235)
0760	703576	1	BOLT, Carriage, 1/4-20 x 3/4, G5 (used on 1696235)
0780	1925592SM	1	SCREW, Hex Washer Head, Taptite, 1/4-20 x 3/4
0800	1737510YP	2	CABLE, Steering Control (used on 1696235)
0810	1737511YP	1	CABLE, Traction Drive (used on 1696235)
0820	703134	2	BOLT, Oval Head, 10-24 x 1-1/2
1050	703059	2	BOLT, Carriage, 5/16-18 x 2

Not for
Reproduction

Footnotes

The above parts group applies to the following Mfg. Nos.:

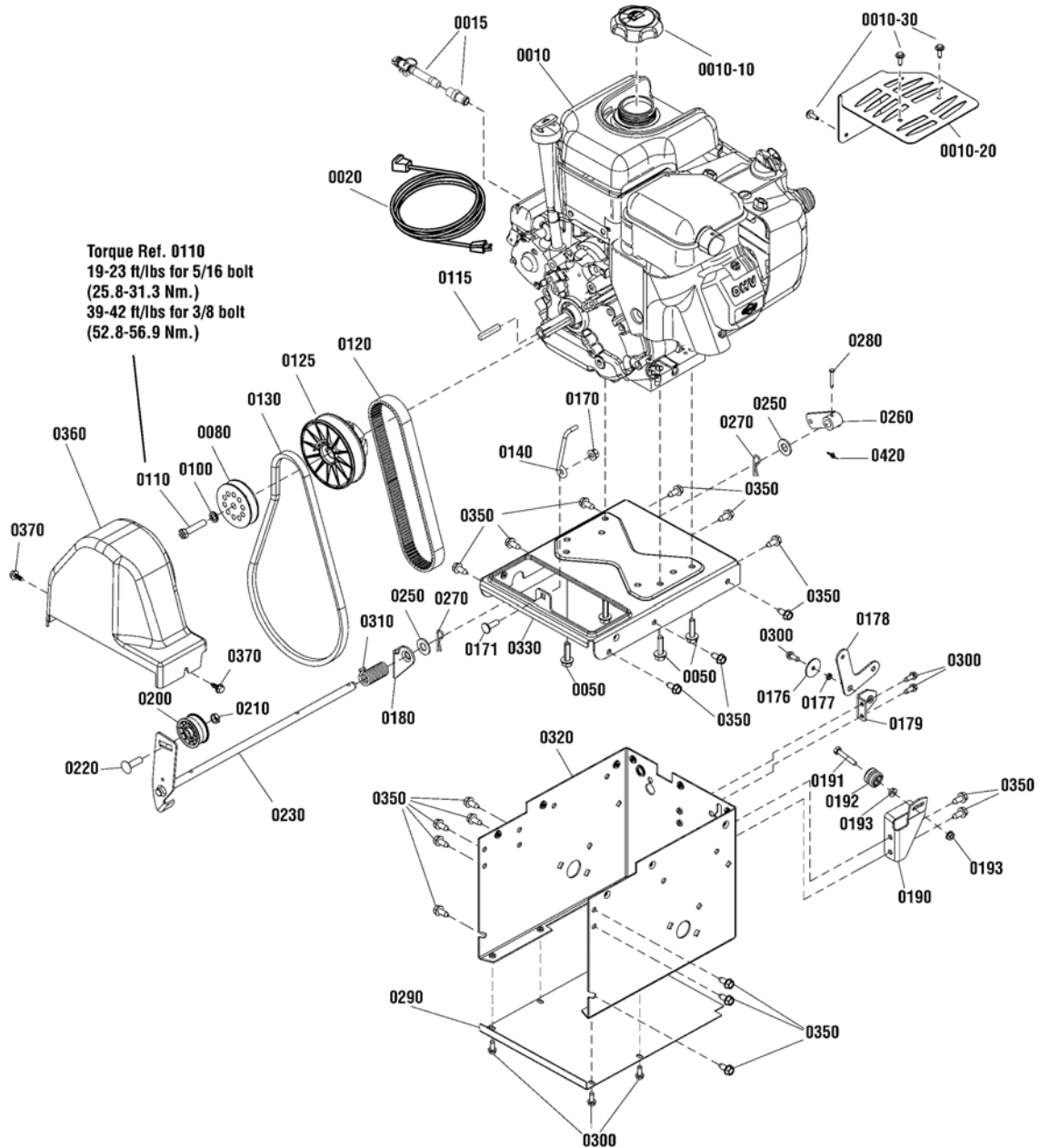
1696234-00 - M924E

1696235-00 - M1227E

Engine & Frame Group - 11.5TP

2990803

NOTE: Unless noted otherwise,
use the standard hardware torque
specification chart.



The above parts group applies to the following Mfg. Nos.:

1696235-00 - M1227E

Engine & Frame Group - 11.5TP

REF NO	PART NO.	QTY.	DESCRIPTION
0010	15C114-0153-F8	1	* ENGINE, 11.5TP Briggs & Stratton (Engine Model: 15C114-0153-F8)
0010-10	792647	1	* CAP, Fuel
0010-20	797003	1	* GUARD, Muffler, Plate
0010-30	699854	2	* SCREW, Muffler Guard
0020	6219MA	1	CORD, Electric
0050	75246GS	4	SCREW, Trilobular, 3/8-16 x 1-1/4
0080	1737509YP	1	PULLEY ASSEMBLY
0100	703116	1	LOCKWASHER, Split, 5/16
0110	1750393YP	1	CAPSCREW, Hex Head, 5/16-24 x 1-3/4, G8
0115	2157427SM	1	KEY, Parallel, 3/16 x 3/16 x 1-1/4
0120	1737220YP	1	V-BELT, Multi-Speed
0125	1733968YP	1	PULLEY ASSEMBLY
0130	585416MA	1	BELT, Auger, V4L 38.10 MF 05-10B
0140	1737377YP	1	STOP, Belt
0170	703222	1	NUT, Hex KEPS, 5/16-18
0171	1931335SM	1	BOLT, Carriage, 5/16-18 x 1, G5
0176	703136	1	WASHER, Flat, 1/4
0177	703124	1	SPACER, 1/4 X 3/16
0178	1737329YP	1	BELLCRANK
0179	1737328AYP	1	BRACKET, Lower
0180	1737297YP	1	BRACKET, Support, Auger Idler
0190	1737347BMYP	1	BRACKET, Guide Wheel
0191	703234	1	CAPSCREW, Hex Head, 1/4-20 x 1-1/2, G5
0192	579860MA	1	SPOOL CABLE, Auger
0193	703233	2	NUT, Serrated Flange, 1/4-20, G5
0200	318372MA	1	IDLER, Plastic Ball Bearing
0210	703230	1	NUT, Centerlock, 3/8-16
0220	703227	1	BOLT, Carriage, 3/8-16 x 1-1/4
0225	1670971SM	1	WASHER, Thrust, 1/2
0230	1737296YP	1	AUGER IDLER
0250	1960027SM	2	WASHER, Flat, 1/2
0260	1733451SM	1	ARM, Control
0270	703300	2	PIN, Hair, 3/32
0280	703313	1	PIN, Clevis
0290	1737221BMYP	1	PANEL, Bottom
0300	703054	7	SCREW, Hex Washer Head, 1/4-20 x 5/8
0310	1737350YP	1	SPRING, Torsion
0320	1737106CYP	1	FRAME BOX
0330	1754138CYP	1	PLATE, Engine Mount
0350	703228	19	SCREW, Thread Roll, 5/16-18 x 3/4
0360	1750551YP	1	COVER, Belt
0370	1751355YP	2	SCREW, Hex Washer Head, Tap, 1/4-20 x 3/4
0420	7023590SM	1	PIN, Cotter, Self Lock, 1/4

Footnotes

Note* To verify your specific engine model, please reference the ID Tag located on your engine. See your local Briggs & Stratton distributor for parts and service.

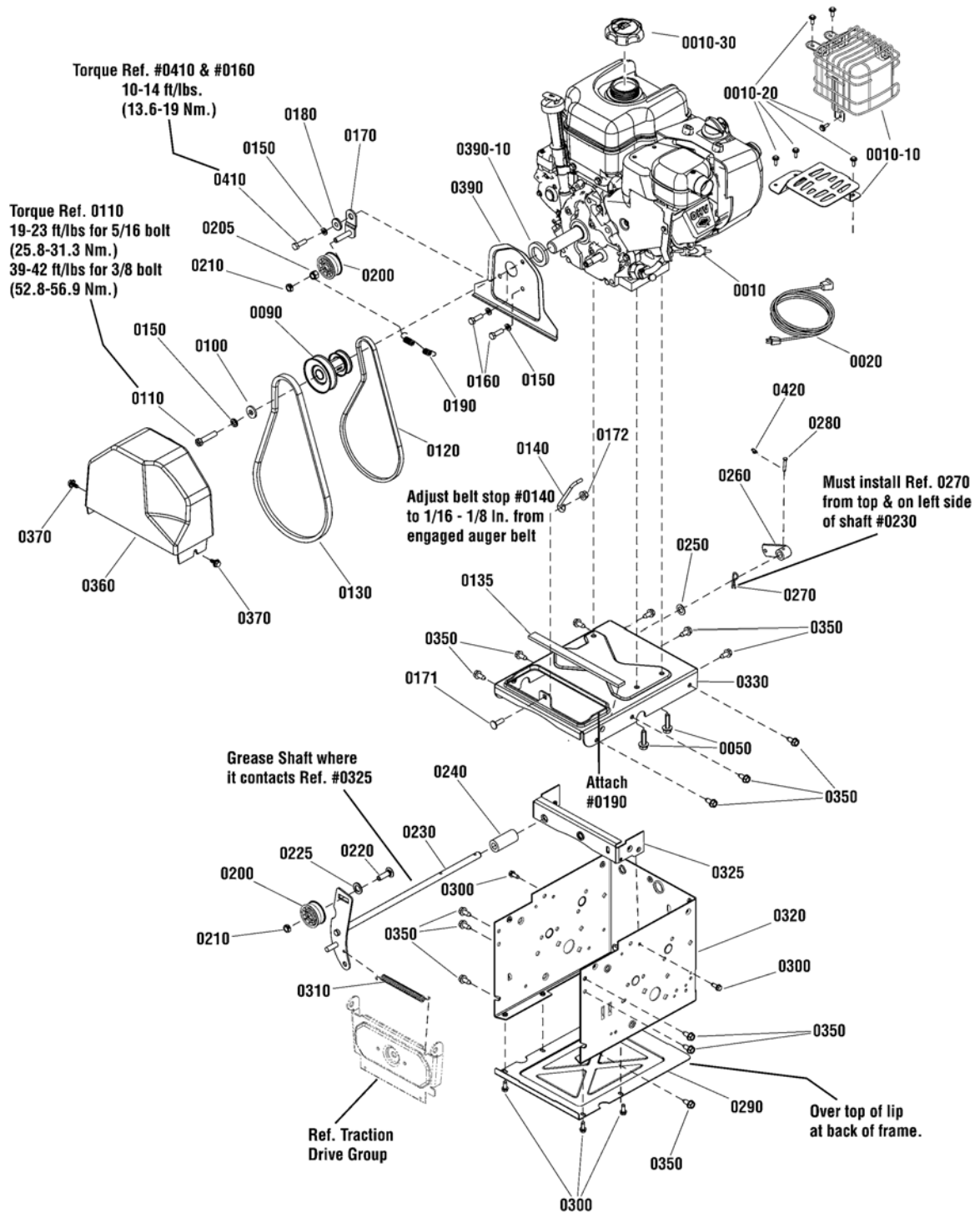
The above parts group applies to the following Mfg. Nos.:

1696235-00 - M1227E

Engine & Frame Group - 9TP

2990620

NOTE: Unless noted otherwise,
use the standard hardware torque
specification chart.



The above parts group applies to the following Mfg. Nos.:

1696202-00 - SIM924E

1696234-00 - M924E

Engine & Frame Group - 9TP

REF NO	PART NO.	QTY.	DESCRIPTION
0010	12D107-0166-F8	1	* ENGINE, 900 Series Briggs & Stratton, Export
0010	12D107-0163-F8	1	* ENGINE, 900 Series Briggs & Stratton, North America
0010-10	793193	1	* GUARD, Muffler, Wire
0010-10	797003	1	* GUARD, Muffler, Plate (Use on Domestic Models Only)
0010-20	699854	2	* SCREW, Muffler Guard
0010-30	795027	1	* CAP, Fuel
0010-30	792647	1	* CAP, Fuel (Use on Domestic Models Only)
0020	6219MA	1	CORD, Electric (Use on Domestic Models Only)
0050	75246GS	4	SCREW, Hex Head, Trilobular, 3/8-16 x 1-1/4
0090	1739514YP	1	PULLEY ASSEMBLY
0100	703298	3	WASHER, Flat, 5/16, G5
0110	7091513YP	1	CAPSCREW, Hex Head, 5/16-24 x 1-3/4 G5
0120	1733324SM	1	V-BELT, Traction Drive, 3L, 33.13
0130	585416MA	1	BELT, Auger, V4L 38.10 MF 05-10B
0135	1750314YP	1	SEAL, Strip
0140	1737377YP	1	STOP, Belt
0150	703116	4	LOCKWASHER, Split, 5/16
0160	703336	2	CAPSCREW, Hex Head, 5/16-24 x 3/4, G5
0170	1739846YP	1	BRACKET, Idler
0171	1931335SM	1	BOLT, Carriage, 5/16-18 x 1, G5
0172	703222	1	NUT, Hex KEPS, 5/16-18
0180	1501065MA	1	BUSHING, Idler Bracket
0190	165X164MA	1	SPRING, Extension, Idler
0200	1502120MA	2	IDLER
0205	1919439SM	1	NUT, Nylock, 3/8-16,G5
0210	7500103YP	2	NUT, Center Lock, 3/8-16
0220	703227	1	BOLT, Carriage, 3/8-16 x 1-1/4
0225	1670971SM	1	WASHER, Thrust, 1/2 ID x 1 OD
0230	1739574YP	1	AUGER IDLER
0240	1739964YP	1	SPACER, Auger Bracket
0250	1960027SM	1	WASHER, 1/2 ID x 7/8 OD
0260	1733451SM	1	ARM, Control
0270	403162MA	1	PIN, Hair, 3/32 x 1.60, G5
0280	703313	1	PIN, Clevis
0290	1737221BMYP	1	PANEL, Bottom
0300	703054	6	SCREW, Hex Washer Head, Thread Roll, 1/4-20 x 5/8
0310	165X159MA	1	SPRING, Extension, Auger, 5.13"
0320	1739107CYP	1	FRAME BOX
0325	1739093AYP	1	ANGLE, Auger & Traction
0330	1754138CYP	1	PLATE, Engine Mount
0350	703228	15	SCREW, Thread Roll, 5/16-18 x 3/4
0360	1750551YP	1	COVER, Belt
0370	1751355YP	2	SCREW, Hex Washer Head, Tap, 1/4-20 x 3/4
0390	1733868BMYP	1	PLATE, Seal

Footnotes

Note* To verify your specific engine model, please reference the ID Tag located on your engine. See your local Briggs & Stratton distributor for parts and service.

The above parts group applies to the following Mfg. Nos.:

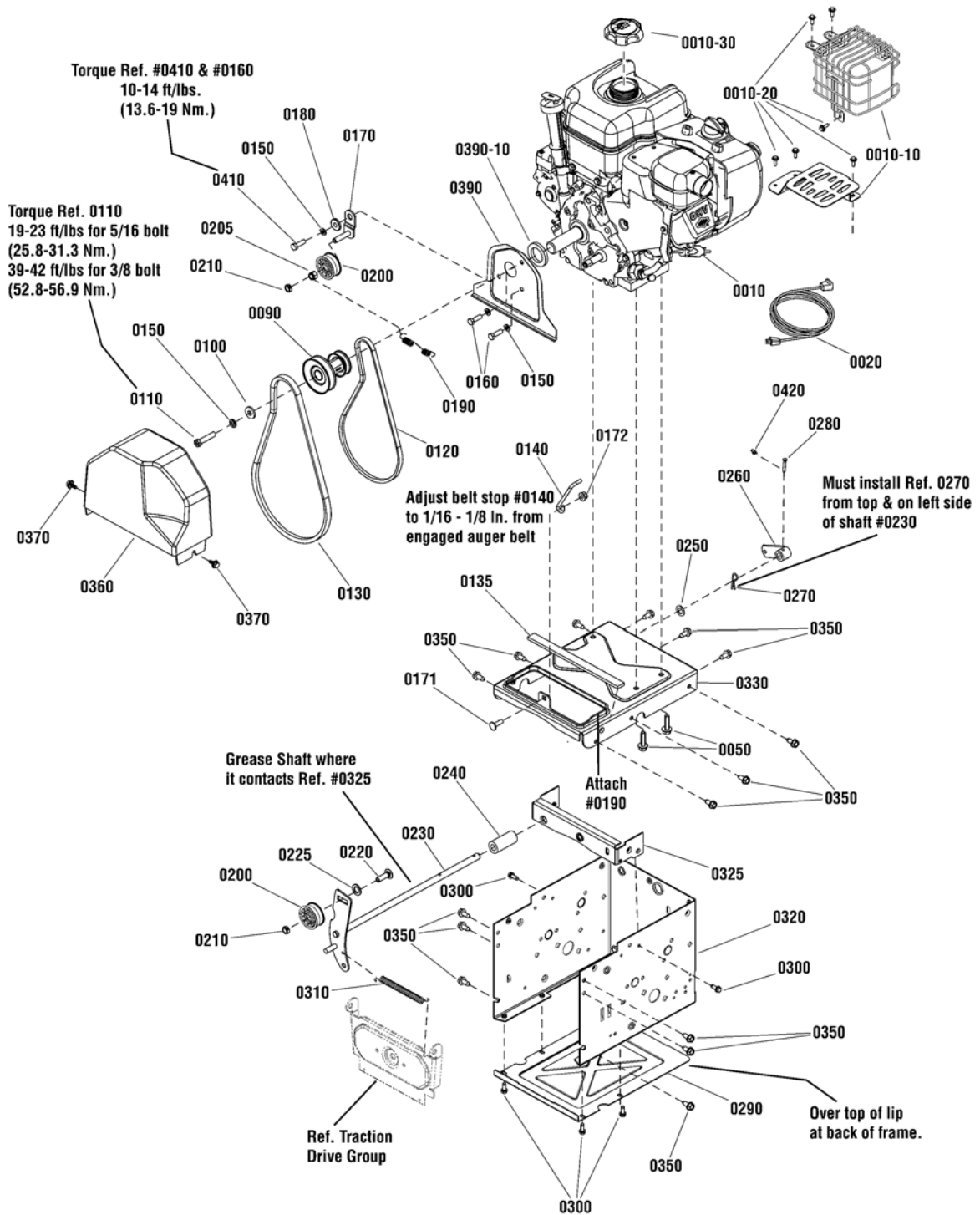
1696202-00 - SIM924E

1696234-00 - M924E

Engine & Frame Group - 9TP

NOTE: Unless noted otherwise,
use the standard hardware torque
specification chart.

2990620



The above parts group applies to the following Mfg. Nos.:

1696202-00 - SIM924E

1696234-00 - M924E

Engine & Frame Group - 9TP

REF NO	PART NO.	QTY.	DESCRIPTION
0390-10	1733898SM	1	SEAL, Foam
0410	703301	1	BOLT, Hex, 5/16-24 x 1.
0420	7023590SM	1	PIN, Cotter, Self Lock, 1/4

Not for
Reproduction

Footnotes

Note* To verify your specific engine model, please reference the ID Tag located on your engine. See your local Briggs & Stratton distributor for parts and service.

The above parts group applies to the following Mfg. Nos.:

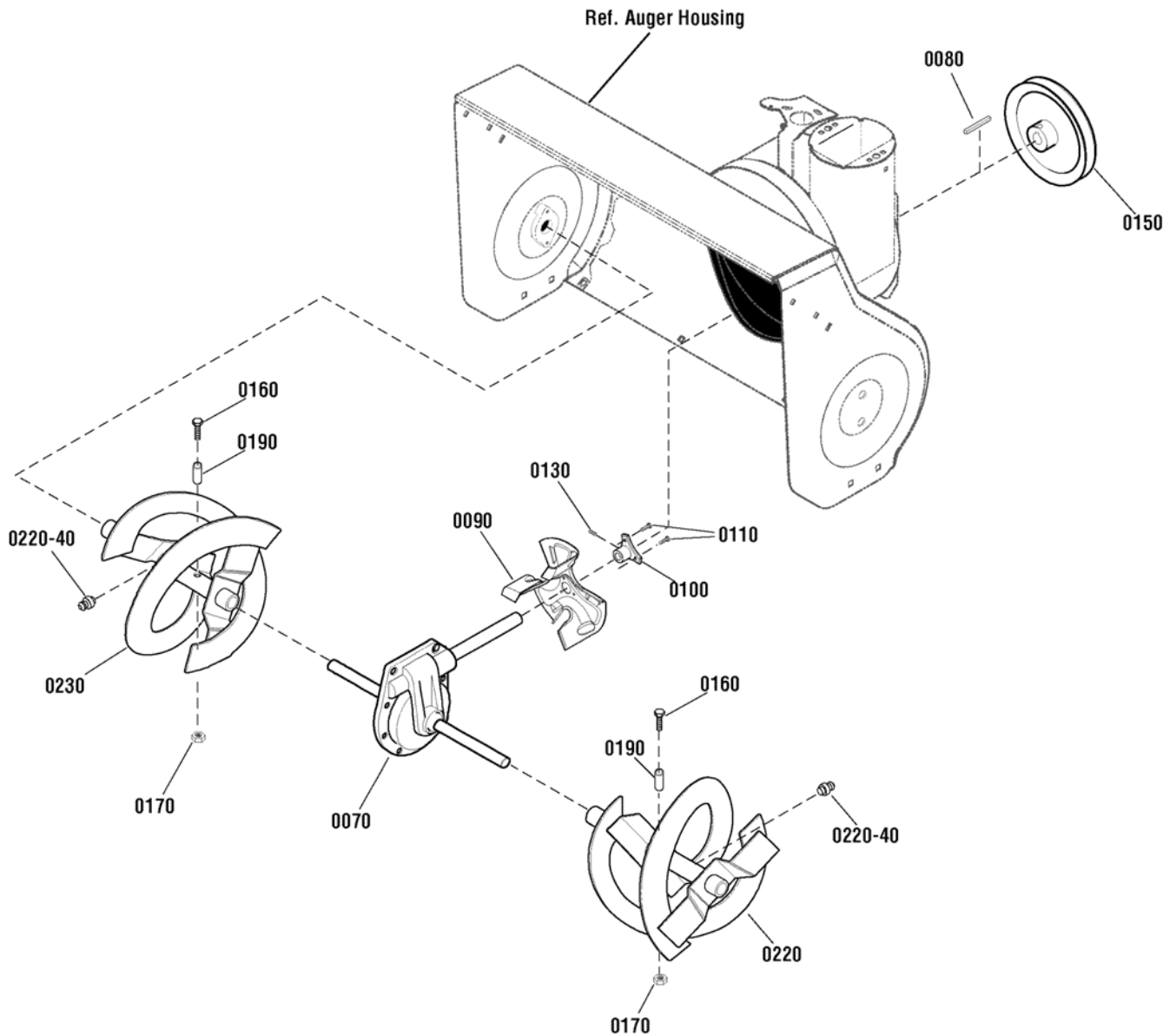
1696202-00 - SIM924E

1696234-00 - M924E

Auger Drive Group

2989660

NOTE: Unless noted otherwise,
use the standard hardware torque
specification chart.



The above parts group applies to the following Mfg. Nos.:

1696202-00 - SIM924E

1696234-00 - M924E

1696235-00 - M1227E

Auger Drive Group

REF NO	PART NO.	QTY.	DESCRIPTION
0070	1753072YP	1	GEAR CASE ASSEMBLY (Use on 24" Models)
0070	1753073YP	1	GEAR CASE ASSEMBLY (Use on 27" Models)
0080	056534MA	1	KEY, Square
0090	1739094AYP	1	IMPELLER
0100	1739073YP	1	HUB, Impeller
0110	1930601SM	3	SCREW, Hex Washer Head, 5/16-18 x 5/8
0130	7090848SM	3	SET SCREW, Socket Head, 5/16-18 x 1/2
0150	1501211MA	1	PULLEY
0160	9524MA	2	CAPSCREW, Hex Head, 1/4-20 x 1-3/4, G2
0170	73826MA	2	NUT, Hex Centerlock, 1/4-20
0190	3943MA	2	SPACER, Sleeve, 1/4 x 1/2
0220	1738299AYP	1	AUGER, LH, 24" (Includes Ref. No. 0220-40)
0220	1740736AYP	1	AUGER, LH, 27" (Includes Ref. No. 0220-40)
0230	1738300AYP	1	AUGER, RH, 24" (Includes Ref. No. 0220-40)
0230	1740737AYP	1	AUGER, RH, 27" (Includes Ref. No. 0220-40)
0220-40	703907	2	FITTING, Grease
--	1501216MA	1	KIT, Shear Bolt

Not for
Reproduction

Footnotes

The above parts group applies to the following Mfg. Nos.:

1696202-00 - SIM924E

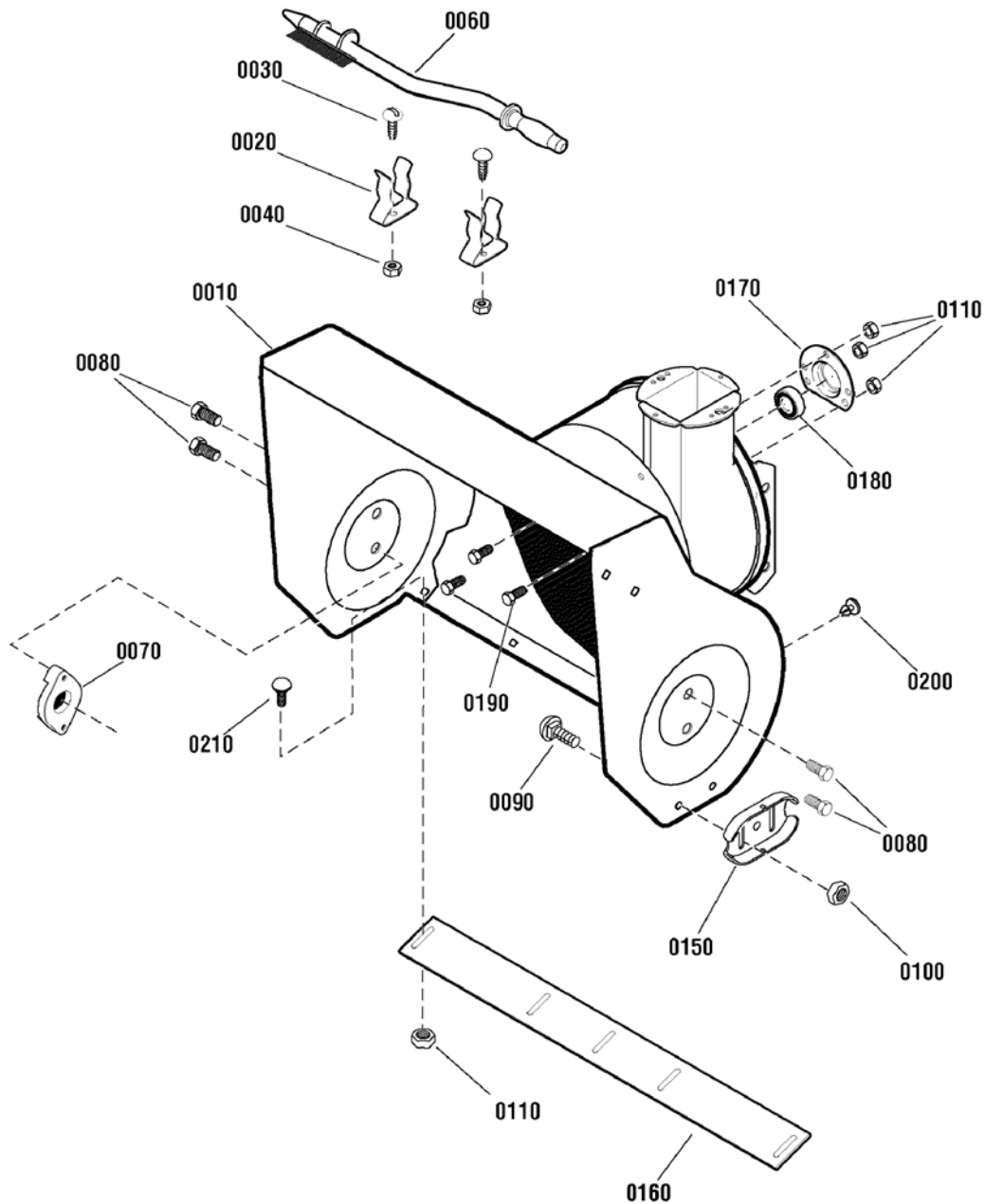
1696234-00 - M924E

1696235-00 - M1227E

Auger Housing Group

2988669

NOTE: Unless noted otherwise,
use the standard hardware torque
specification chart.



The above parts group applies to the following Mfg. Nos.:

1696202-00 - SIM924E

1696234-00 - M924E

1696235-00 - M1227E

Auger Housing Group

REF NO	PART NO.	QTY.	DESCRIPTION
0010	1687510YP	1	AUGER HOUSING ASSEMBLY, 24" (Use on Model 1696202-00)
0010	1687685YP	1	AUGER HOUSING ASSEMBLY, 24" (Use on Model 1696234-00)
0010	1687703YP	1	AUGER HOUSING ASSEMBLY, 27"
0020	1736620YP	2	CLAMP, Retainer
0030	1960569SM	2	SCREW, Truss Head Torx, #10-24 x 3/8
0040	703412	2	NUT, Nylock, 10 x 24
0060	1736094YP	1	BRUSH, Cleanout
0070	53757MA	2	BEARING, Auger Shaft
0080	25X021MA	4	CAPSCREW, Hex Head, 5/16-18 x 3/4
0090	703448	4	BOLT, Carriage, 3/8-16 x 3/4, G5
0100	703333	4	NUT, Hex Flange, 3/8-16
0110	703409	7	NUT, Hex Flange, Serrated Lock, 5/16-18
0150	1727854BMYP	2	SHOE, Skid, Reversible
0160	1738301AYP	1	BLADE, Scraper, 24"
0160	1740745AYP	1	BLADE, Scraper, 27"
0170	582957YZMA	1	RETAINER, Ball Bearing
0180	1705897SM	1	BEARING, Ball
0190	703822	3	BOLT, Hex, 5/16-18 x 5/8
0200	760040MA	2	PLUG, Panel
0210	7090799SM	4	BOLT, Carriage, 5/16-18 x 5/8, G5

Not for
Reproduction

Footnotes

The above parts group applies to the following Mfg. Nos.:

1696202-00 - SIM924E

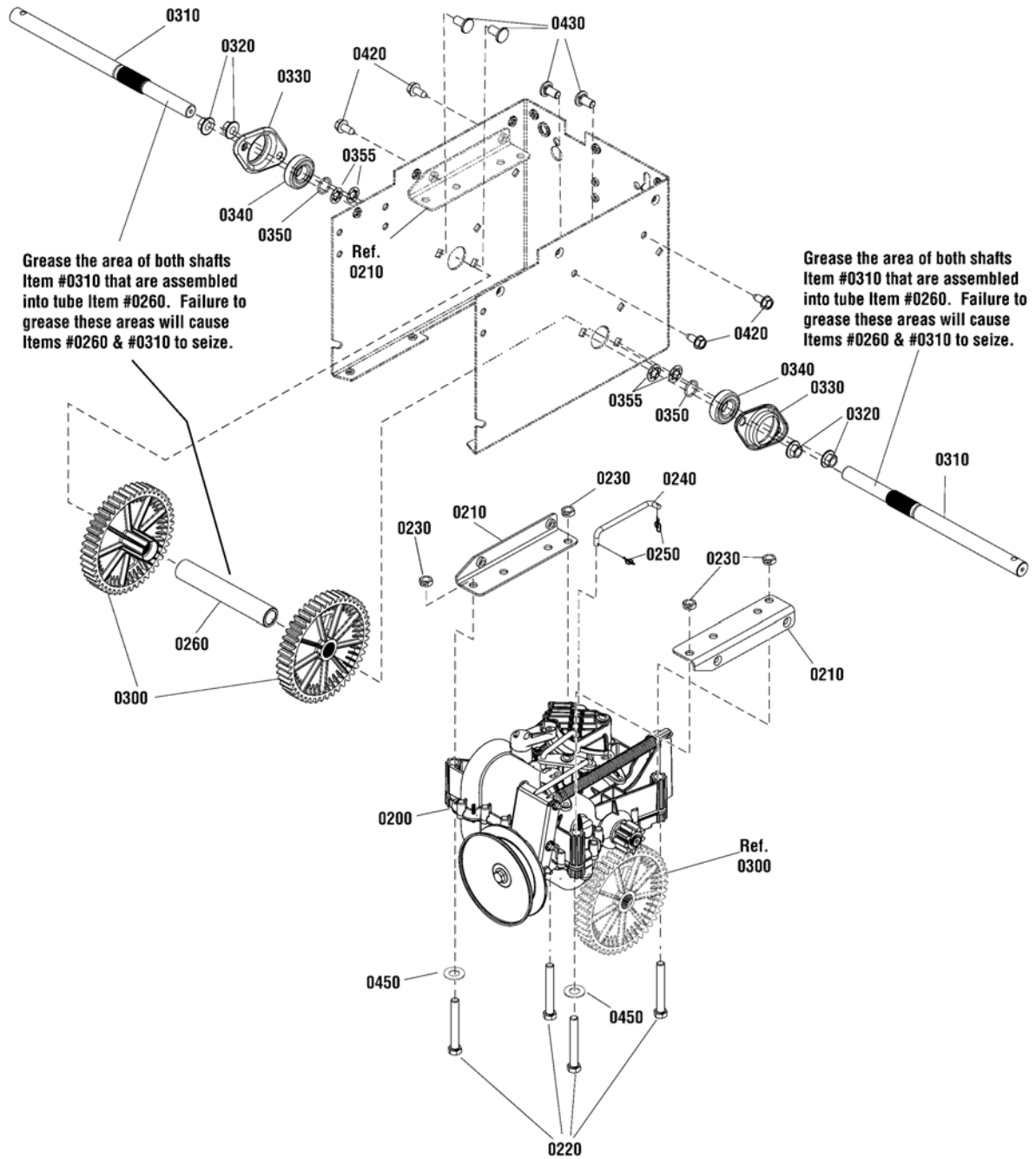
1696234-00 - M924E

1696235-00 - M1227E

Traction Drive Group - General Transmission

2987638

NOTE: Unless noted otherwise,
use the standard hardware torque
specification chart.



The above parts group applies to the following Mfg. Nos.:

1696235-00 - M1227E

Traction Drive Group - General Transmission

REF NO	PART NO.	QTY.	DESCRIPTION
0200	1733972YP	1	TRANSMISSION, General Transmission H2
0210	1737267AYP	2	BRACKET
0220	7091557SM	4	CAPSCREW, Hex Head, 3/8C x 2-3/4 GR5
0230	1960251SM	4	NUT, Hex Jam, 3/8-16
0240	1737330YP	1	ROD, Speed Select
0250	7023590SM	2	COTTER PIN, 1/4" Self Locking
0260	1737310YP	1	TUBE, Support
0300	1737311YP	2	GEAR, Drive
0310	1737309YP	2	AXLE
0320	1928352SM	4	NUT, Hex Flange, Whiz Lock Large, 3/8-16
0330	1736396YP	2	RETAINER, Bearing
0340	53263MA	2	BEARING, Ball
0350	1737742YP	2	RING, Retaining
0355	7013847YP	4	RETAINER, Bolt 3/8"
0420	1664847SM	4	SCREW, Hex Washer Head Taptite, 5/16-18 X 3/4
0430	1737686YP	4	BOLT, Carriage, FH GR 5, 3/8-16 x 3/4
0450	703184	2	WASHER, Flat, 3/8

Not for
Reproduction

Footnotes

Note* See Transmission Assembly Group for detailed service parts.

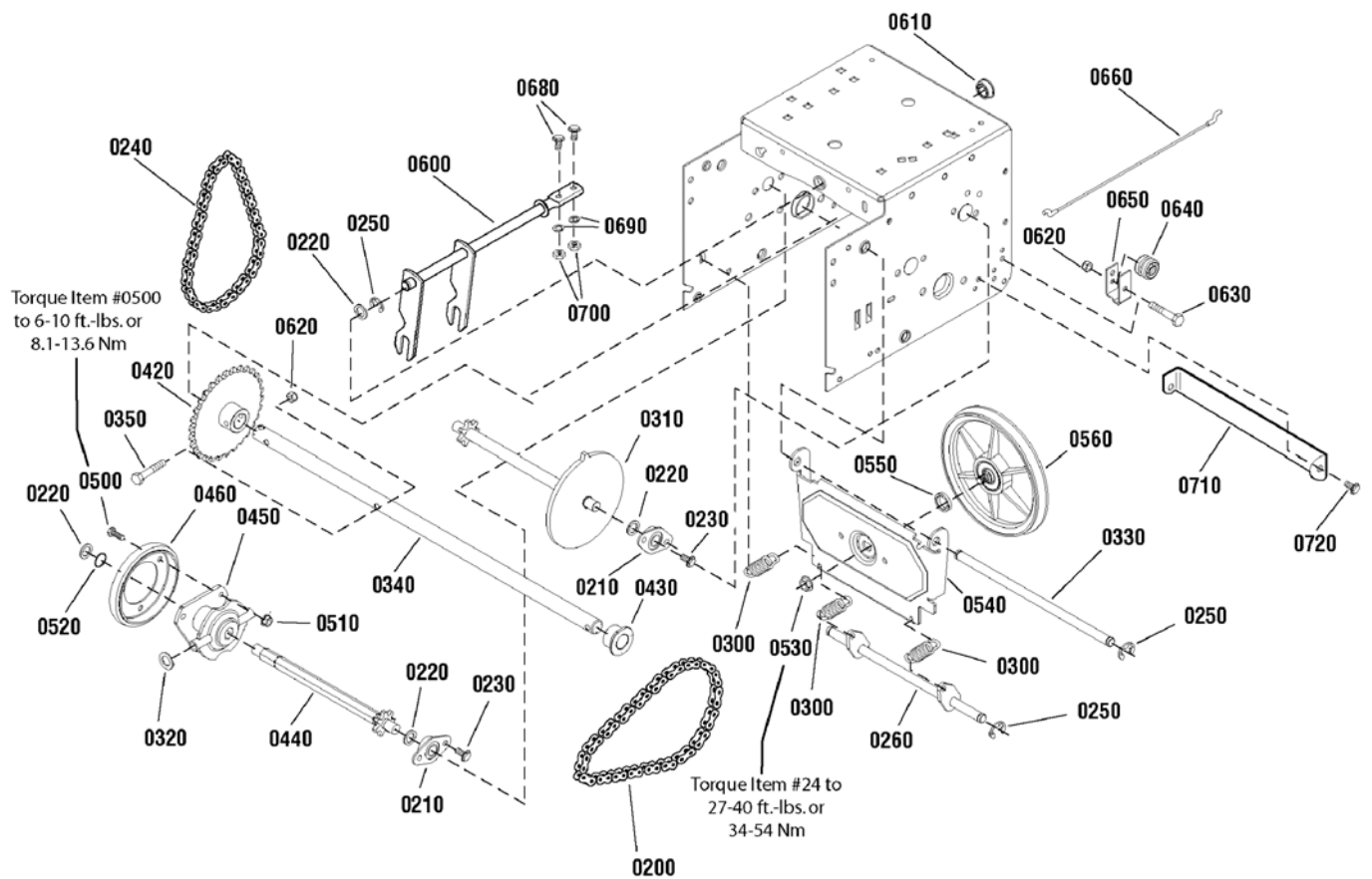
The above parts group applies to the following Mfg. Nos.:

1696235-00 - M1227E

Traction Drive Group - Standard

2989173

NOTE: Unless noted otherwise,
use the standard hardware torque
specification chart.



The above parts group applies to the following Mfg. Nos.:

1696202-00 - SIM924E

1696234-00 - M924E

Traction Drive Group - Standard

REF NO	PART NO.	QTY.	DESCRIPTION
0200	579851MA	1	CHAIN, Roller, #420 x 19.00
0210	334163MA	4	BEARING AND RETAINER ASSEMBLY
0220	703337	5	WASHER, Flat, 1/2
0230	1924856SM	8	SCREW, Hex Washer Head Taptite, 5/16-18 x 1/2
0240	579868MA	1	CHAIN, Roller, #420 x 18.00
0250	11X30MA	5	RETAINER, Ring, 7/16
0260	703328	1	SPRING LINK ASSEMBLY
0300	1736469YP	3	SPRING, Extension
0310	1501090MA	1	SPROCKET, Set
0320	1960027SM	2	WASHER, 1/2
0330	1501092YZMA	1	AXLE, Swing Plate
0340	1501563MA	1	AXLE, 16"
0350	01X93MA	1	SCREW, 1/4 - 20 x 1-3/4
0420	1501089MA	1	SPROCKET, Axle
0430	1501114MA	2	BEARING, Axle
0440	1501100MA	1	HEX SHAFT & SPROCKET ASSEMBLY
0450	1739282YP	1	HUB, Friction Wheel & Bearing
0460	1501435MA	1	WHEEL, Friction Disc
0500	1921959SM	3	CAPSCREW, Hex Head 1/4-20 x 5/8 G5
0510	1928372SM	3	NUT, Hex KEPS 1/4-20
0520	1733326SM	1	RING, Retaining Extension
0530	15X114MA	1	NUT, Flange Lock, 3/8-24
0540	1501057YZMA	1	PLATE, Swinging
0550	1501158MA	1	SPACER, Friction Pulley
0560	1501115MA	1	FRICTION PULLEY ASSEMBLY
0600	1501110YZMA	1	ASSEMBLY, Speed Selector
0610	579944MA	1	BEARING, Flange
0620	1920397SM	2	NUT, Hex Lock ESNA Light 1/4-20
0630	1922837SM	1	CAPSCREW, Hex Head, 1/4-20 x 1-1/2 G5
0640	579860MA	1	SPOOL CABLE, Auger Control
0650	1750398YP	1	BRACKET, Cable Spool
0660	1750403YP	1	CABLE, Front Drive
0680	703338	2	BOLT, Hex, 1/4-20 x 5/8
0690	1916964SM	2	LOCKWASHER, Spring, 1/4-20
0700	7091576SM	2	NUT, Hex, 1/4-20, G5
0710	1502030YZMA	1	BRACKET, Support
0720	1927429SM	2	CAPSCREW, Hex Washer Head, Taptite, 1/4-20 x 5/8

Footnotes

The above parts group applies to the following Mfg. Nos.:

1696202-00 - SIM924E

1696234-00 - M924E

Transmission SERVICE PARTS - General Transmission H2

1733972

NOTE: Unless noted otherwise,
use the standard hardware torque
specification chart.

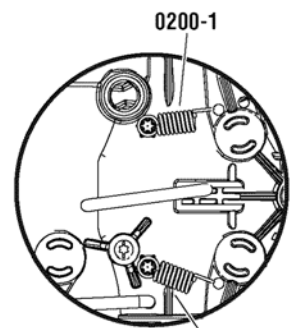
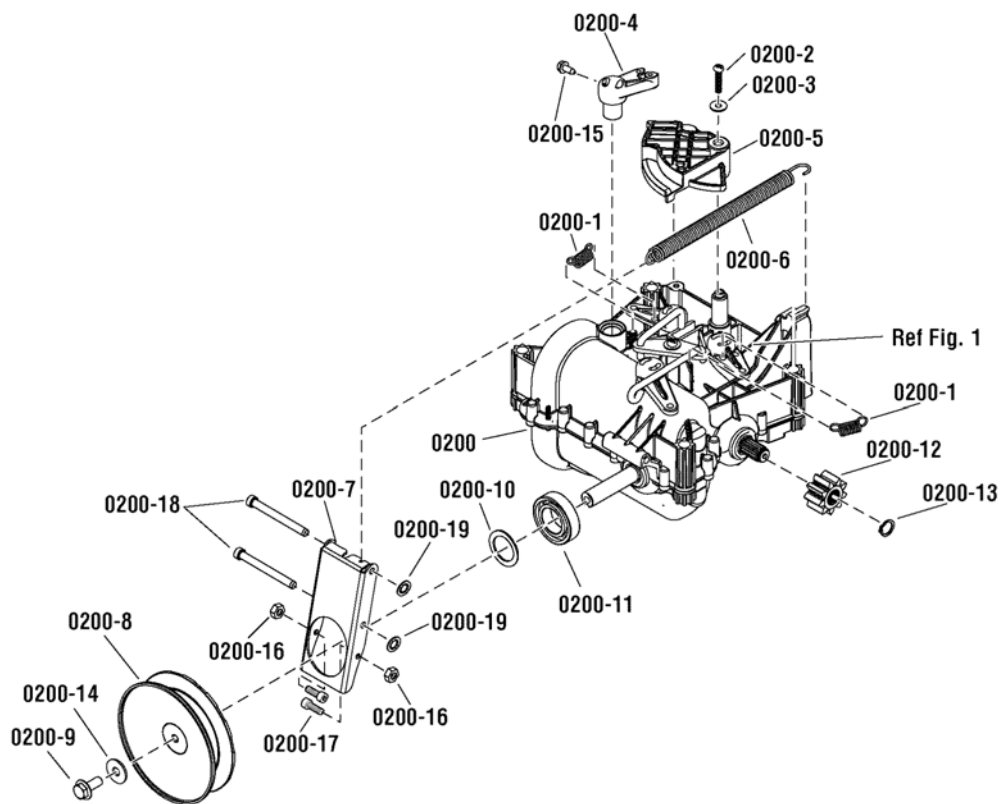


Fig. 1
Top View of Transmission

The above parts group applies to the following Mfg. Nos.:

1696235-00 - M1227E

Transmission SERVICE PARTS - General Transmission H2

REF NO	PART NO.	QTY.	DESCRIPTION
0200	1733972YP	1	TRANSMISSION, Complete General Transmission H2
0200-1	1739646YP	2	SPRING, Traction, 8.75 Inches
0200-2	1739645YP	1	SCREW, 5 X 25
0200-3	1739641YP	1	WASHER, 5.3 X 15 X 1.2.ipt
0200-4	1739642YP	1	LEVER
0200-5	1739644YP	1	CAM, Control
0200-6	1739640YP	1	SPRING, Variator
0200-7	1739625YP	1	SHIFT ARM
0200-8	1739624YP	1	PULLEY ASSEMBLY
0200-9	1739622YP	1	SCREW, M8x20 left
0200-10	1739636YP	1	WASHER, 25 X 35 X 1.5
0200-11	1739639YP	1	BEARING, 6005 2RS
0200-12	1739648YP	2	GEAR
0200-13	1739647YP	2	RETAINER
0200-14	1739623YP	1	WASHER, 0.8 X 27 X 3
0200-15	1739643YP	4	SCREW, 4 X 16
0200-16	1739626YP	2	NUT
0200-17	1739629YP	2	BOLT, Allen-Head, CHC M5 X 1.2
0200-18	1739632YP	2	PIN
0200-19	1739634YP	4	WASHER, Starlock

Not for
Reproduction

Footnotes

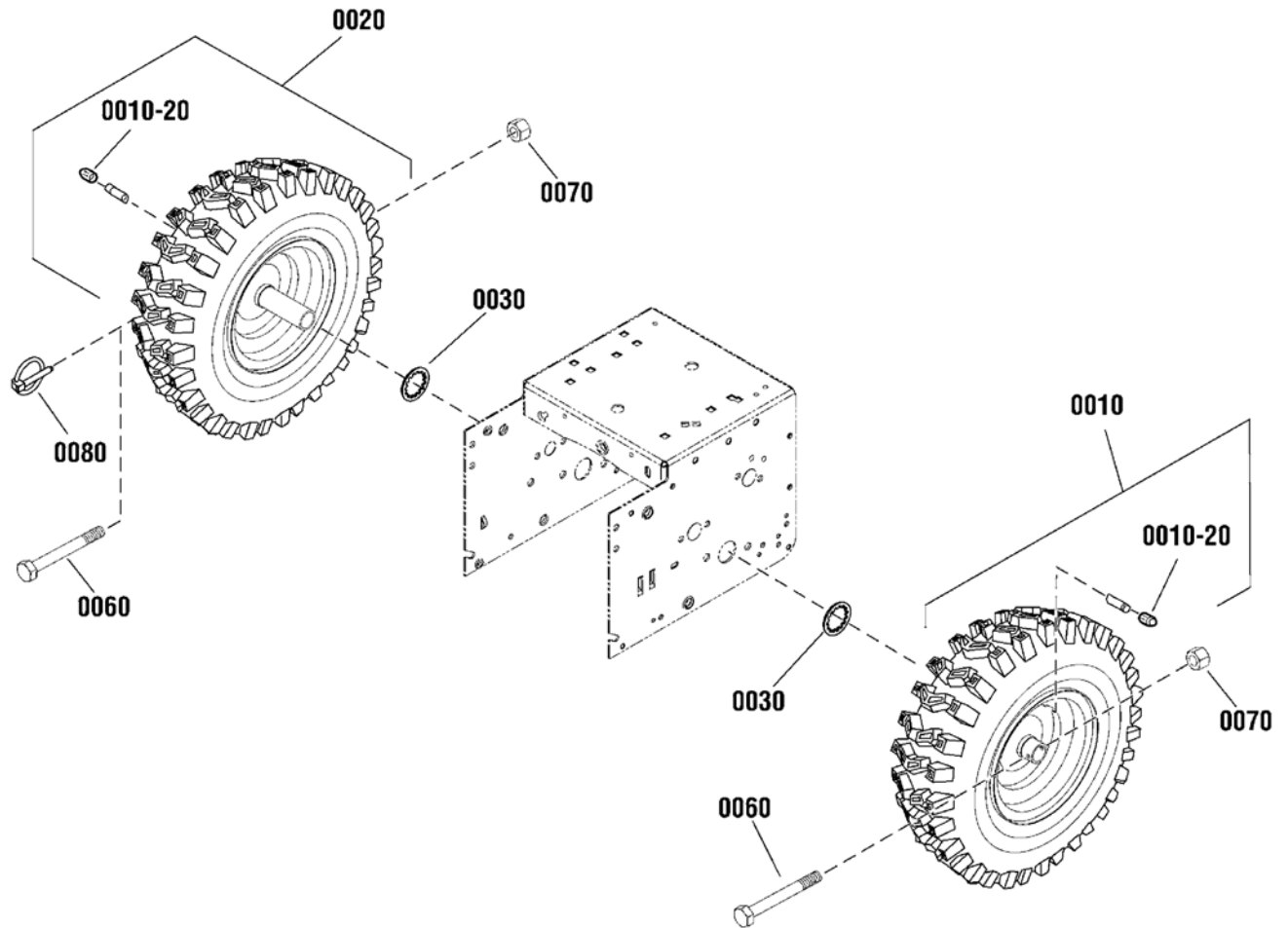
The above parts group applies to the following Mfg. Nos.:

1696235-00 - M1227E

Wheels & Tires Group

2990787

NOTE: Unless noted otherwise,
use the standard hardware torque
specification chart.



The above parts group applies to the following Mfg. Nos.:

1696202-00 - SIM924E

1696234-00 - M924E

1696235-00 - M1227E

Wheels & Tires Group

REF NO	PART NO.	QTY.	DESCRIPTION
0010	1754486YP	1	WHEEL ASSEMBLY, 15 x 5, LH (Includes Ref. No. 0010-20)
0010-20	2172353SM	2	VALVE STEM & CAP
0020	1754487YP	1	WHEEL ASSEMBLY, 15 x 5, RH (Includes Ref. No. 0010-20)
0030	1657528SM	2	RING, Retaining (Used on 24" Models only)
0060	577015MA	1	BOLT, Hex Head, 1/4-20 x 1-3/4, G5 (Qty 2 used on 1696235)
0070	703232	1	NUT, Nylock, 1/4-20 (Qty 2 used on 1696235)
0080	703226	1	PIN, Klik (Used on 1696202 & 1696234 only)

Not for
Reproduction

Footnotes

The above parts group applies to the following Mfg. Nos.:

1696202-00 - SIM924E

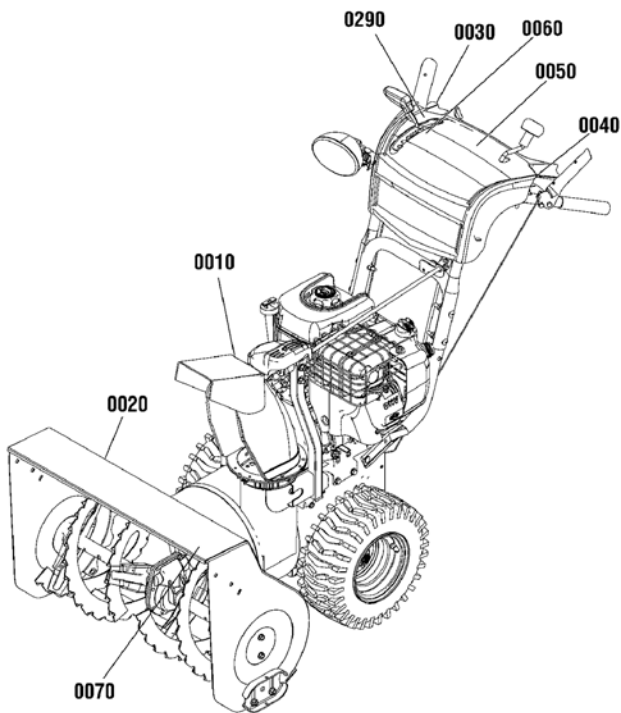
1696234-00 - M924E

1696235-00 - M1227E

Decals Group

NOTE: Unless noted otherwise, use the standard hardware torque specification chart.

2990627



0020



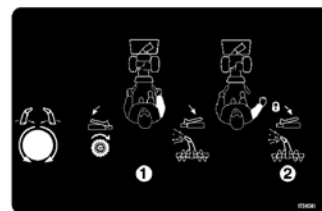
0010



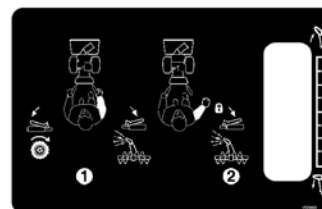
0020



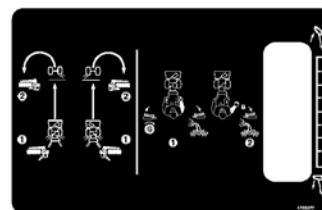
0010



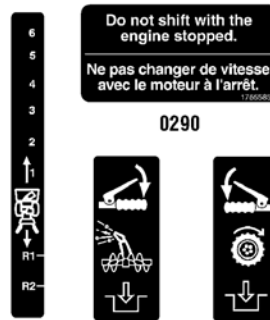
0050



0050



0050



0290

0060

0030

0040



0070



0110 / 0140



0080

The above parts group applies to the following Mfg. Nos.:

- 1696202-00 - SIM924E
- 1696234-00 - M924E
- 1696235-00 - M1227E

Decals Group

REF NO	PART NO.	QTY.	DESCRIPTION
0010	1727207SM	1	DECAL, Chute Warning, No Text
0010	1737865YP	1	DECAL, Danger Chute, FR/ENG
0020	1737867YP	1	DECAL, Danger Auger, No Text
0020	1737866YP	1	DECAL, Danger Foot, FR/ENG
0030	1753133YP	1	DECAL, Auger Control
0040	1753134YP	1	DECAL, Traction Control
0050	1751581YP	1	DECAL, Operator Controls (Used on Export Models)
0050	1755155YP	1	DECAL, Operator Controls (Use on Domestic Model)
0050	1755277YP	1	DECAL, Operator Controls, Free Hand Operation (Use on Model 1696235)
0060	1751582YP	1	DECAL, Gear Shift
0070	1754673YP	1	DECAL, Model, 924E
0070	1754850YP	1	DECAL, Model, M924E
0070	1754851YP	1	DECAL, Model, M1227E
0080	1754671YP	1	DECAL, Logo
0110	1733247SM	1	DECAL, Logo, Swoosh, 25"
0140	1733071SM	1	DECAL, Logo, Swoosh, 23.1"
0290	1755585YP	1	DECAL, Do Not Shift (Use on Model 1696235)

Not for
Reproduction

Footnotes

The above parts group applies to the following Mfg. Nos.:

1696202-00 - SIM924E

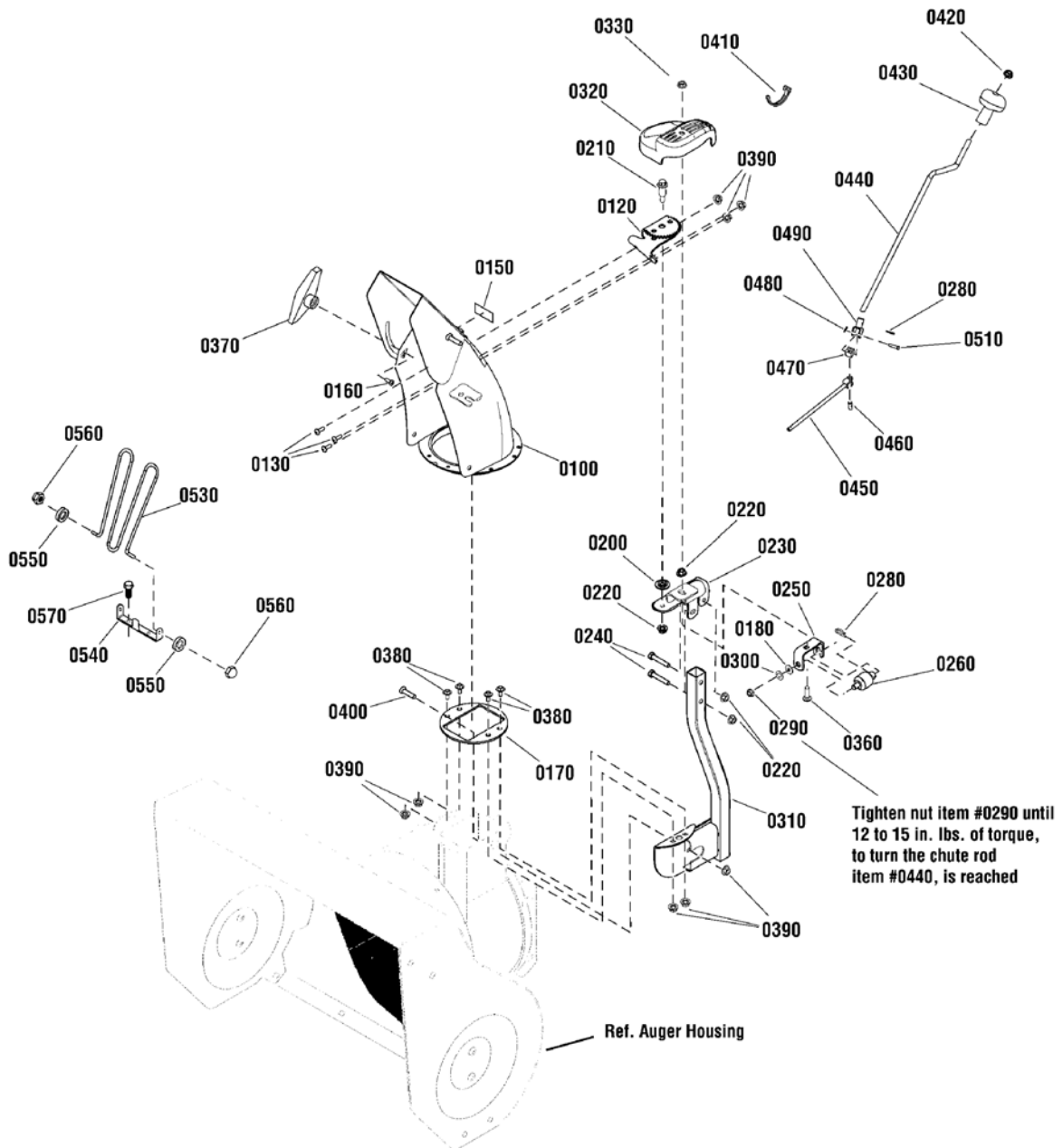
1696234-00 - M924E

1696235-00 - M1227E

Chute & Rotation Group - Dash Mount Crank

2989695

NOTE: Unless noted otherwise,
use the standard hardware torque
specification chart.



The above parts group applies to the following Mfg. Nos.:

1696202-00 - SIM924E

Chute & Rotation Group - Dash Mount Crank

REF NO	PART NO.	QTY.	DESCRIPTION
0100	1736379CYP	1	CHUTE
0120	1736038YP	1	GEAR, Chute Support
0130	1960715SM	3	SCREW, Truss Head Torx, 1/4-20 x 3/4
0150	1706085SM	2	DECAL, Strip
0160	704210	1	BOLT, Carriage, 5/16-18 x 1-1/2 G5
0170	1735767YP	1	GUIDE, Chute Ring
0180	2860210SM	3	WASHER, Nylon, 3/8 ID x 1-1/8 OD
0200	1733026SM	1	WASHER, 1/2 ID x 1-1/8 OD
0210	1732412SM	1	BOLT, Shoulder, 5/16-18
0220	703222	4	NUT, Hex KEPS, 5/16-18
0230	1734423ASM	1	SUPPORT, Gear Crank
0240	1922127SM	2	CAPSCREW, Hex Head, 5/16-18 x 1-3/4, G5
0250	1738020YP	1	SUPPORT, Worm
0260	1734439SM	1	WORM, Chute
0280	1501293MA	1	PIN, Hair
0290	1960762SM	1	NUT, Hex Lock Jam, ESNA, 3/8-24
0300	1734542SM	1	WASHER, Cup 3/8 ID x 3/4 OD
0310	1736195AYP	1	CHUTE SUPPORT
0320	1734442SM	1	COVER, GEAr
0330	1935048SM	1	NUT, Hex Flange, Two Way Lock, 5/16-18
0360	1931335SM	1	BOLT, Carriage, 5/16-18 x 1 G5
0370	1501260MA	1	KNOB, Wing, 5/16-18
0380	691005	4	SCREW, Hex Washer Head
0390	703463	8	NUT, Flange Nylock, 1/4-20
0400	703440	1	BOLT, Carriage, 1/4-20 x 3/4
0410	7012080SM	2	CABLE TIE
0420	1960093SM	1	NUT, Push Pal, 3/8
0430	1714084SM	1	KNOB
0440	1751224YP	1	CRANK, Chute Handle
0450	703173	1	ROD & YOKE ASSEMBLY
0460	578060MA	1	PIN, 3/8 x 1
0470	578063MA	1	BLOCK, Universal Pivot
0480	703464	1	PIN, Cotter, 1/16 x 1/2
0490	1733611SM	1	YOKE ADAPTER ASSEMBLY
0510	578309MA	1	PIN, Clevis, 1/4 x 1.09
0530	1733475SM	1	GUARD, Chute
0540	1752883YP	1	BRACKET, Chute Guard
0550	1738174YP	2	GROMMET
0560	1960140SM	2	NUT, Push, 3/16
0570	704130	2	SCREW, Hex Head, Taptite, 1/4-20 x 1/2

Footnotes

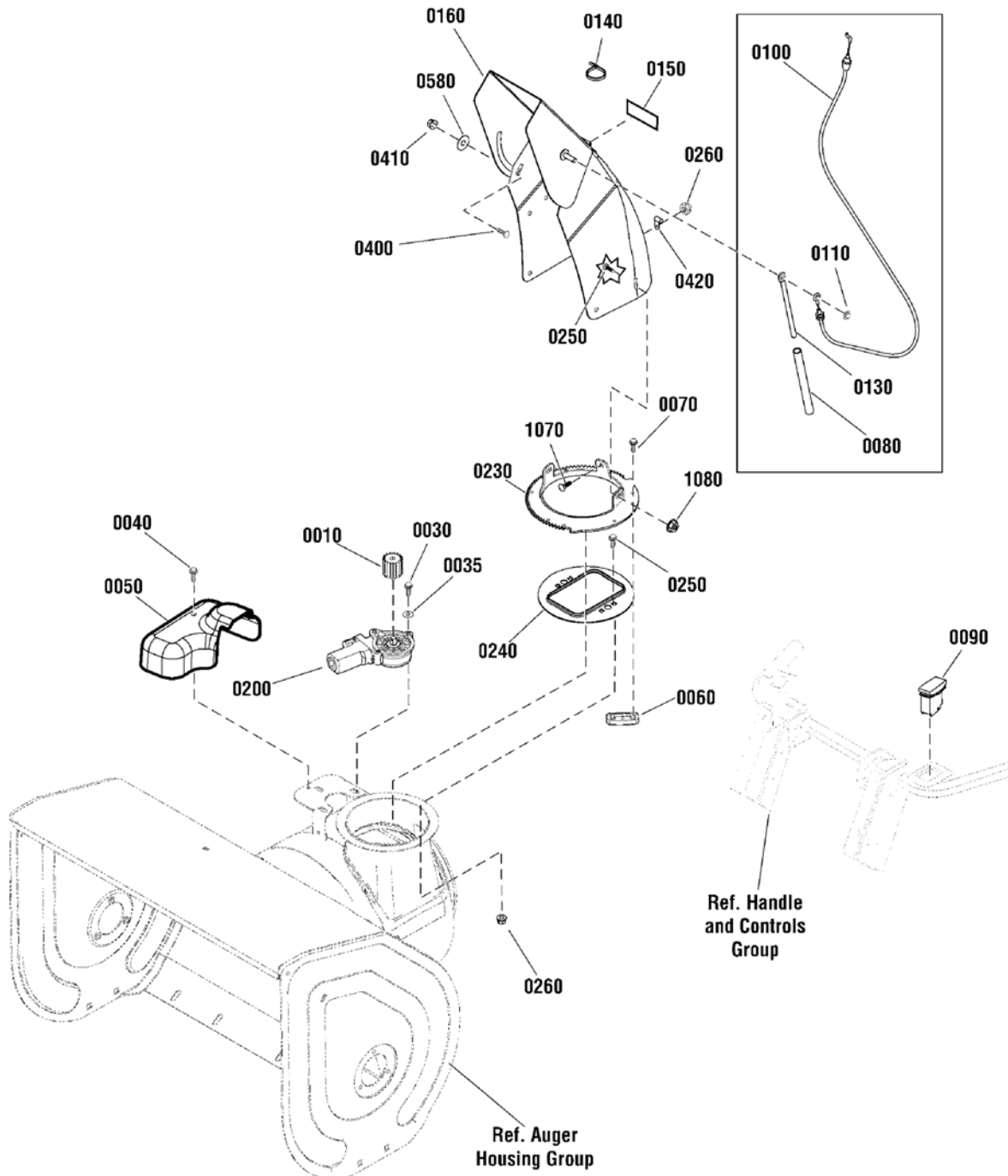
The above parts group applies to the following Mfg. Nos.:

1696202-00 - SIM924E

Chute & Rotation Group - Remote

2990784

NOTE: Unless noted otherwise,
use the standard hardware torque
specification chart.



The above parts group applies to the following Mfg. Nos.:

1696234-00 - M924E
1696235-00 - M1227E

Chute & Rotation Group - Remote

REF NO	PART NO.	QTY.	DESCRIPTION
0010	1728967SM	1	PINION, 1-1/4 Lg
0030	1739621YP	3	SCREW, Torx Button Head, M5 x .8 x .14
0035	7091552SM	3	WASHER, Flat, 7/32 x 1/2 OD
0040	1925592SM	1	CAPSCREW, Hex Washer, Self-Tapping, 1/4-20 x 3/8
0050	1752877YP	1	COVER, Electric Chute Rotation
0060	7011938SM	3	RETAINER, Spout
0070	1960001SM	6	CAPSCREW, Hex Washer, 10-14 x 5/8
0080	1734647SM	1	SPRING, Compression, 9/16 OD X 6-1/16 Lg
0090	1752240YP	1	SWITCH, Chute Rotation
0100	1750623YP	1	CABLE, Deflector Control
0110	1932718SM	1	PUSHNUT, 5/16 Dia. 5/8 OD
0130	1734708ASM	1	ROD, 5/16 Dia., 5.88 Lg
0140	1701011SM	1	TIE, Self Locking, 7-5/16 Lg
0150	1706085SM	2	DECAL, Strip
0160	1737443CYP	1	CHUTE ASSEMBLY
0200	1739309YP	1	MOTOR, Spout Rotator, 38"
0230	1737465AYP	1	GEAR, Chute
0240	1737411YP	1	ADAPTER, Chute Ring
0250	1931317SM	4	BOLT, Carriage, 1/4-20 x 3/4
0260	2860694SM	7	NUT, Hex Flange, 1/4-20, ESNA
0400	703185	1	BOLT, Carriage, 5/16-18 x 3/4, G5
0410	703115	1	NUT, Flange Nylock, 5/16-18
0420	703174	1	CLIP, Cable Mounting
0580	2860210SM	1	WASHER, Nylon, 3/8
1070	1931317SM	3	BOLT, Carriage, 1/4-20 x 3/4

Footnotes

The above parts group applies to the following Mfg. Nos.:

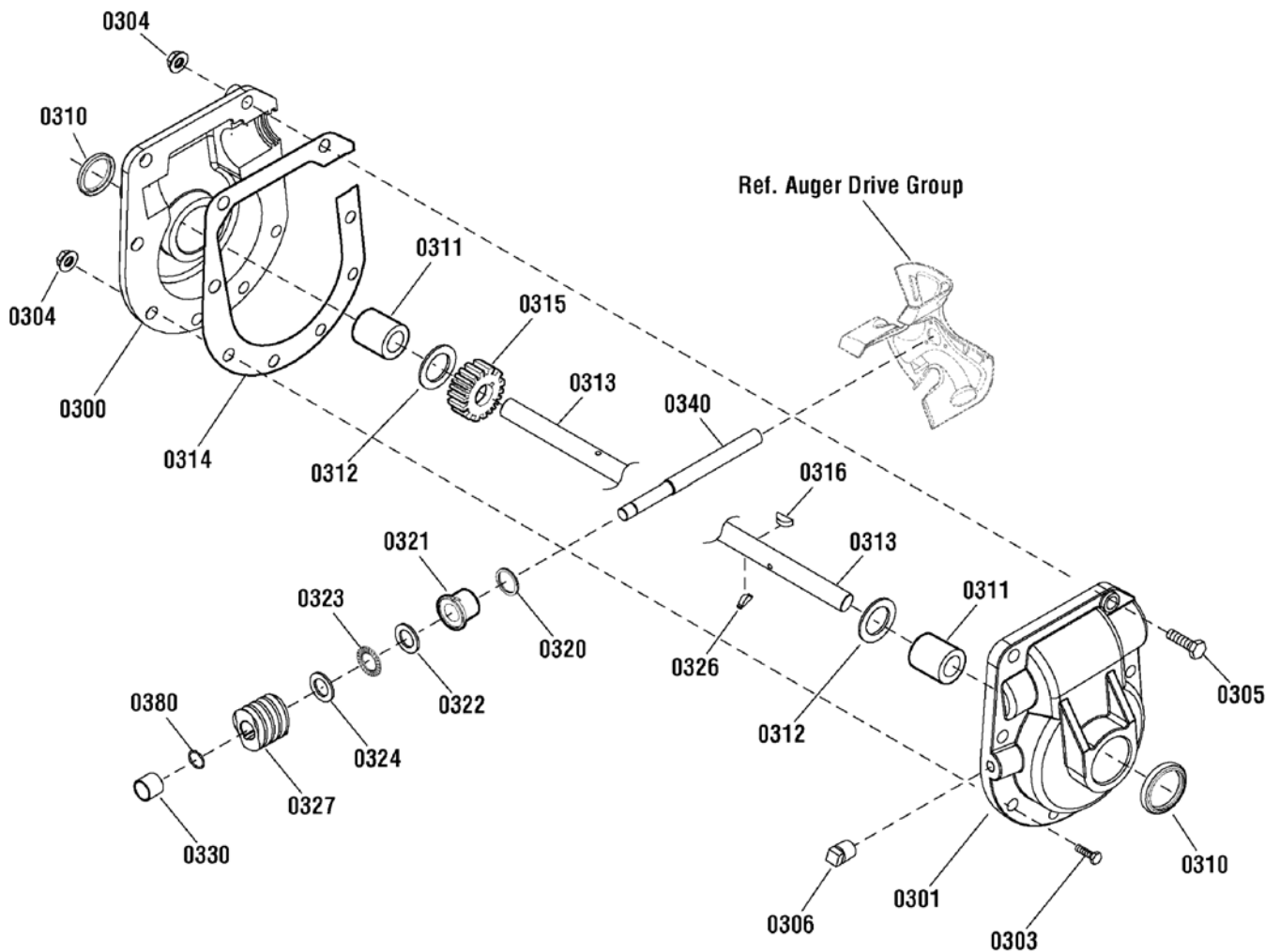
1696234-00 - M924E

1696235-00 - M1227E

Gear Case Assembly

1753072

NOTE: Unless noted otherwise, use the standard hardware torque specification chart.



The above parts group applies to the following Mfg. Nos.:

1696202-00 - SIM924E

1696234-00 - M924E

1696235-00 - M1227E

Gear Case Assembly

REF NO	PART NO.	QTY.	DESCRIPTION
0300	780390MA	1	CASE, Gear, RH
0301	895MA	1	CASE, Gear, LH
0303	910828MA	7	CAPSCREW, Hex, 5/16-24 X 1
0304	71100MA	8	NUT, Hex Flange, Serrated, 5/16-24
0305	330434MA	1	CAPSCREW, Hex Head, 5/16-24 x 1-1/2
0306	53749MA	1	PLUG, Pipe, 1/4-18
0310	780151MA	2	SEAL, Oil
0311	53743MA	2	BEARING, Sleeve, 1 x 1-1/4 x 1
0312	53748MA	2	WASHER, Flat, 1
0313	1739058YP	1	SHAFT, Auger Out, 24"
0314	8971MA	1	GASKET
0315	1752500YP	1	GEAR, Worm
0316	73905MA	1	KEY, Woodruf
0320	53737MA	1	RING, Quad
0321	583126MA	1	BEARING, Flange, 3/4ID x 1-1/8 OD
0322	48275MA	1	WASHER, Thrust
0323	50684MA	1	BEARING, Roll Thrust, 3/4 ID x 1-1/4 OD
0324	48275MA	1	WASHER, Thrust
0326	50795MA	1	KEY, Hi-Pro
0327	53732MA	1	WORMGEAR
0330	53731MA	1	BEARING, Sleeve, 3/4 ID x 7/8 OD
0340	1751535YP	1	SHAFT, Impeller
0380	1752515YP	1	RING, Retaining, 3/4"

Not for
Reproduction

Footnotes

The above parts group applies to the following Mfg. Nos.:

1696202-00 - SIM924E

1696234-00 - M924E

1696235-00 - M1227E

Not for
Reproduction

Hardware Identification & Torque Specifications

Torque Specification Chart								
FOR STANDARD METRIC MACHINE HARDWARE (Tolerance ± 20%)								
Property Class	5.6		8.8		10.9		12.9	
	Class 5.6		Class 8.8		Class 10.9		Class 12.9	
Size Of Hardware	in/lbs	Nm.	in/lbs	Nm.	in/lbs	Nm.	in/lbs	Nm.
	ft/lbs		ft/lbs		ft/lbs		ft/lbs	
M3	5.88	.56	13.44	1.28	19.2	1.80	22.92	2.15
M4	13.44	1.28	30.72	2.90	43.44	4.10	52.56	4.95
M5	26.4	2.50	60.96	5.75	5.97	8.10	7.15	9.7
M6	44.64	4.3	7.3	9.9	10.3	14	12.1	16.5
M7	5.2	7.1	12.1	16.5	16.9	23	19.9	27
M8	7.7	10.5	17.7	24	25	34	29	40
M10	15	21	35	48	50	67	59	81
M12	26	36	61	83	86.2	117	103	140
M14	42	58	101	132	136	185	162	220
M16	64	88	147	200	210	285	250	340
M18	89	121	202	275	287	390	346	470
M20	126	171	290	390	405	550	486	660
M22	169	230	390	530	559	745	656	890
M24	217	295	497	375	708	960	840	1140
M27	320	435	733	995	1032	1400	1239	1680
M30	435	590	995	1350	1401	1900	1681	2280
M33	590	800	1349	1830	1902	2580	2278	3090
M36	759	1030	1740	2360	2441	3310	2935	3980
M39	988	1340	2249	3050	3163	4290	3798	5150

Torque Specification Chart						
FOR STANDARD MACHINE HARDWARE (Tolerance ± 20%)						
Hardware Grade	No Marks		SAE Grade 5		SAE Grade 8	
	SAE Grade 2		SAE Grade 5		SAE Grade 8	
Size Of Hardware	in/lbs	Nm.	in/lbs	Nm.	in/lbs	Nm.
	ft/lbs		ft/lbs		ft/lbs	
8-32	19	2.1	30	3.4	41	4.6
8-36	20	2.3	31	3.5	43	4.9
10-24	27	3.1	43	4.9	60	6.8
10-32	31	3.5	49	5.5	68	7.7
1/4-20	66	7.6	8	10.9	12	16.3
1/4-28	76	8.6	10	13.6	14	19.0
5/16-18	11	15.0	17	23.1	25	34.0
5/16-24	12	16.3	19	25.8	29	34.0
3/8-16	20	27.2	30	40.8	45	61.2
3/8-24	23	31.3	35	47.6	50	68.0
7/16-14	30	40.8	50	68.0	70	95.2
7/16-20	35	47.6	55	74.8	80	108.8
1/2-13	50	68.0	75	102.0	110	149.6
1/2-20	55	74.8	90	122.4	120	163.2
9/16-12	65	88.4	110	149.6	150	204.0
9/16-18	75	102.0	120	163.2	170	231.2
5/8-11	90	122.4	150	204.0	220	299.2
5/8-18	100	136	180	244.8	240	326.4
3/4-10	160	217.6	260	353.6	386	525.0
3/4-16	180	244.8	300	408.0	420	571.2
7/8-9	140	190.4	400	544.0	600	816.0
7/8-14	155	210.8	440	598.4	660	897.6
1-8	220	299.2	580	788.8	900	1,244.0
1-12	240	326.4	640	870.4	1,000	1,360.0

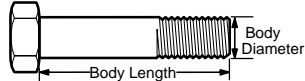
The guides and ruler furnished below are designed to help you select the appropriate hardware.



Nut, M8

Thread Diameter (mm)
Inside Diameter (in)
Threads per inch

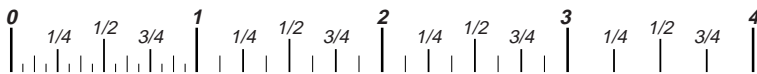
Nut, 1/2-16



Screw, M8- 1.25 x 25

Thread Diameter (mm)
Body Diameter
Distance between threads (mm)
Threads per inch
Body Length (mm)
Body Length (in)

Screw, 1/2- 16 x 2



Standard Hardware Sizing

When a washer or nut is identified as **1/2"** (M8), this is the *Nominal size*, meaning the *inside diameter* is 1/2 inch (8mm metric thread diameter); if a second number is present it represents the *threads per inch* (distance between threads).

When bolt or capscrew is identified as **1/2 - 16 x 2"** (M8 - 1.25 x 50), this means the *Nominal size*, or body diameter is 1/2 inch (8mm metric thread diameter), the second number, 16, represents the *threads per inch*, (1.25 thread diameter). The final number is the body length of the bolt or screw, 2 inches (50mm).

NOTES

- These torque values are to be used for all hardware excluding: locknuts, self-tapping screws, thread forming screws, sheet metal screws and socket head setscrews.
- Recommended seating torque values for locknuts:
 - for prevailing torque locknuts - use 65% of grade 5 torques.
 - for flange whizlock nuts and screws - use 135% of grade 5 torques.
- Unless otherwise noted on assembly drawings, all torque values must meet this specification.

Common Hardware Types

Hex Head Capscrew

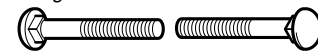


Washer



Lockwasher

Carriage Bolt



Hex Nut

Wrench & Fastener Size Guide

1/4" Bolt or Nut Wrench—7/16"	5/16" Bolt or Nut Wrench—1/2"	3/8" Bolt or Nut Wrench—9/16"	7/16" Bolt or Nut Wrench (Bolt)—5/8" Wrench (Nut)—11/16"	1/2" Bolt or Nut Wrench—3/4"
M6 Bolt or Nut Wrench—10mm	M8 Bolt or Nut Wrench—13mm	M10 Bolt or Nut Wrench—17mm	M12 Bolt or Nut Wrench—19mm	M14 Bolt or Nut Wrench—22mm

Not for
Reproduction

**IT IS THE POLICY OF BRIGGS & STRATTON CORP. TO IMPROVE ITS PRODUCTS
WHENEVER IT IS POSSIBLE AND PRACTICAL TO DO SO. WE RESERVE THE RIGHT TO
MAKE CHANGES OR ADD IMPROVEMENTS AT ANY TIME WITHOUT INCURRING ANY
OBLIGATION TO MAKE SUCH CHANGES ON PRODUCTS.**

Briggs & Stratton Yard Power Products Group

3515 N. 124 Street / PO Box 702
Wauwatosa, WI 53222 USA

www.simplicitymfg.com

© Copyright 2014 by Briggs & Stratton Corporation
Milwaukee, WI, USA. All rights reserved